

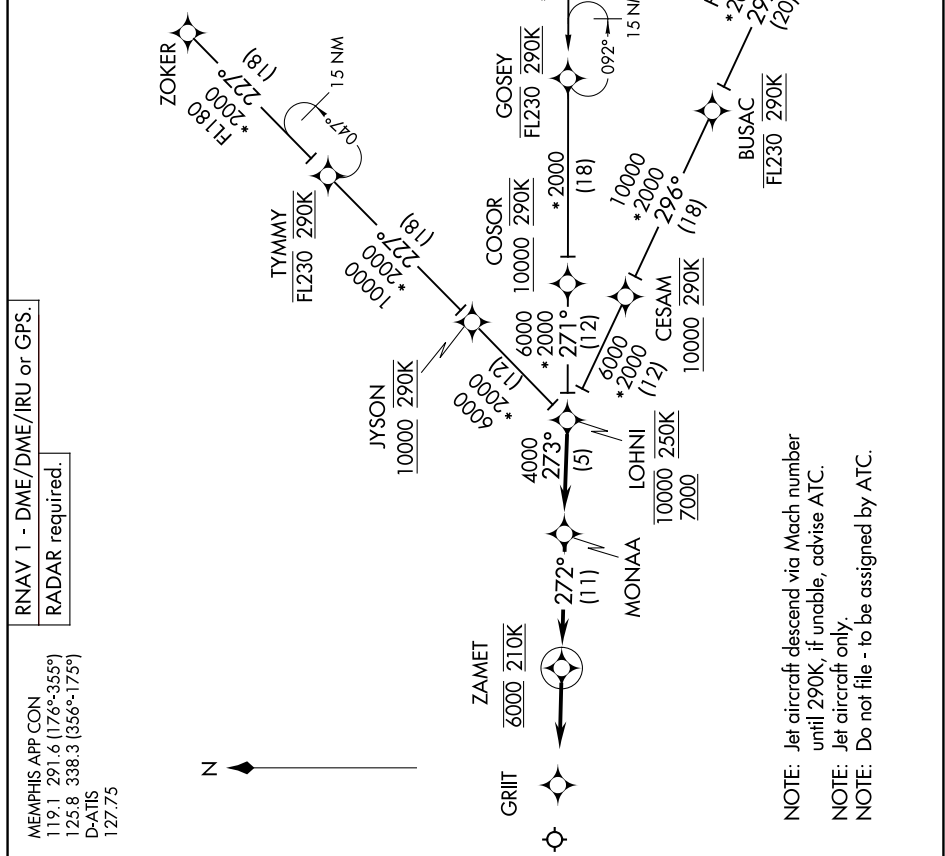
MONAA FOUR ARRIVAL (RNAV)

SE-1, 13 JUN 2024 to 11 JUL 2024

ARRIVAL ROUTE DESCRIPTION

FASON TRANSITION (FASON.MONAA4);
 HOMNN TRANSITION (HOMNN.MONAA4);
 MATCN TRANSITION (MATCN.MONAA4);
 ZOKER TRANSITION (ZOKER.MONAA4);

From LOHNI on track 273° to MONAA, then on track 272° to cross ZAMET at 6000 and 210K, then on track 272°. Expect radar vectors to final approach course.



RNAV 1 - DME/DME/IRU or GPS.
 RADAR required.

MEMPHIS APP CON
 119.1 291.6 (176°-355°)
 125.8 338.3 (356°-175°)
 D-ATIS
 127.75

NOTE: Jet aircraft descend via Mach number until 290K, if unable, advise ATC.
 NOTE: Jet aircraft only.
 NOTE: Do not file - to be assigned by ATC.

NOTE: Chart not to scale.

MONAA FOUR ARRIVAL (RNAV)

SE-1, 13 JUN 2024 to 11 JUL 2024