

WAAS CH 49107 W36D	APP CRS 360°	Rwy Idg TDZE Apt Elev	9000 335 341
--	------------------------	-----------------------------	---

RNAV (GPS) RWY 36R

MEMPHIS INTL (MEM)

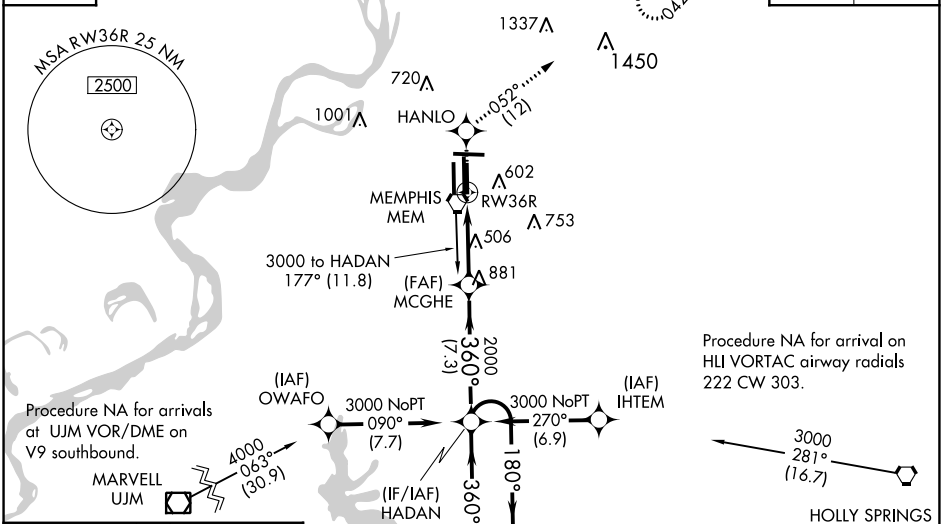
⚠ For uncompensated Baro-VNAV systems, LNAV/VNAV NA below -1.5°C (5°F) or above 48°C (118°F). Simultaneous approach authorized. DME/DME RNP-0.3 NA. LNAV procedure NA during simultaneous operations. Use of FD or AP required during simultaneous operations.

ALSF-2
MISSED APPROACH: Climb to 5000 direct HANLO and on 052° track to OROCU and hold, continue climb-in-hold to 5000.

MEMPHIS APP CON 119.1 291.6 (176°-355°) 125.8 338.3 (356°-175°)	MEMPHIS TOWER (Rwy 9-27) 118.3 257.8 (Rwys 18C-36C, 18L-36R) 119.7 257.8 (Rwy 18R-36L) 128.425 257.8	GND CON (Rwy 9-27) 121.0 379.2 (Rwys 18C-36C, 18L-36R) 121.9 379.2 (Rwy 18R-36L) 121.65 379.2
---	--	---

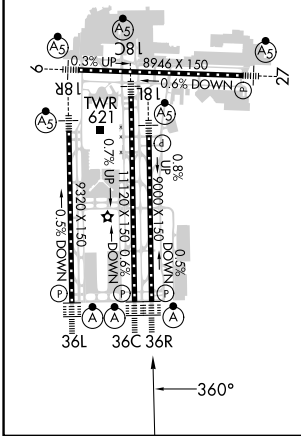
D-ATIS
127.75

CLNC DEL **125.2** CPDLC

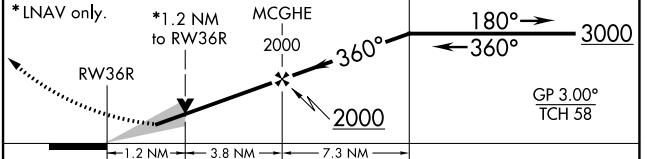


ELEV 341 **D** TDZE 335

TDZ/CL Rwys 18L, 18C, 18R, 36R, 36C, and 36L
HIRL all Rwys



5000 HANLO tr 052° OROCU VGS1 and RNAV glidepath not coincident (VGS1 Angle 3.00/TCH 69). 4 NM Holding Pattern HADAN



CATEGORY	A	B	C	D
LPV DA		639/24	304 (300-1/2)	
LNAV/VNAV DA		763/50	428 (500-1)	
LNAV MDA	760/24	425 (500-1/2)	760/40 425 (500-3/4)	760/50 425 (500-1)
C CIRCLING	940-1	599 (600-1)	940-1 1/2 599 (600-1 1/2)	1020-2 1/4 679 (700-2 1/4)

SE-1, 13 JUN 2024 to 11 JUL 2024

SE-1, 13 JUN 2024 to 11 JUL 2024