


# RNAV (RNP) X RWY 18R

MEMPHIS INTL (MEM)

APP CRS	Rwy Idg	<b>9320</b>
<b>180°</b>	TDZE	<b>295</b>
	Apt Elev	<b>341</b>

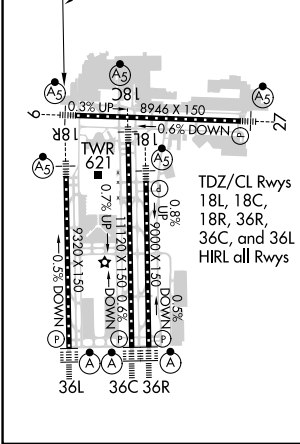
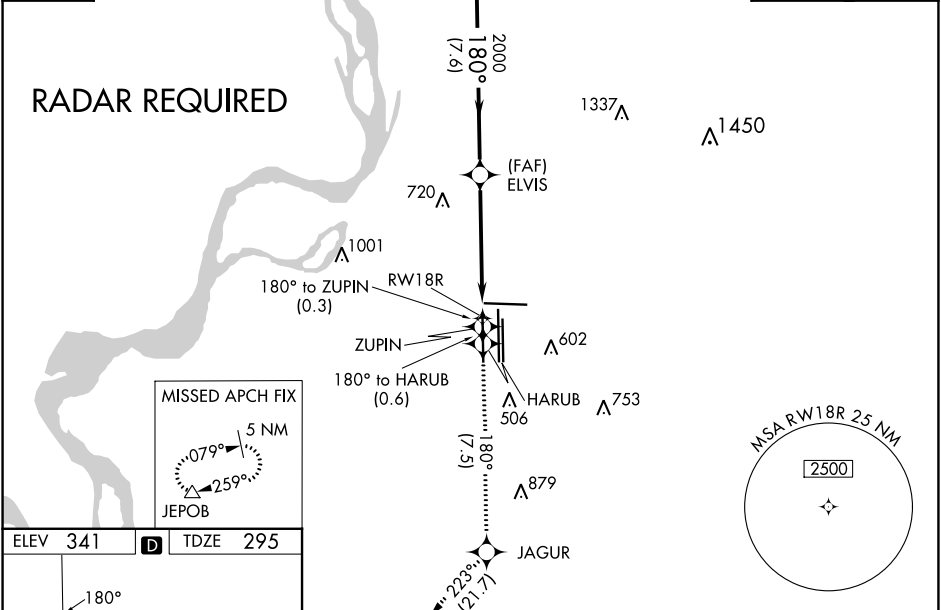
▼ For uncompensated Baro-VNAV systems, procedure NA below -9°C (16°F) or above 48°C (118°F). Simultaneous approach authorized. GPS required. Missed approach requires RNP less than 1.0. Use of FD or AP required during simultaneous operations.

MALSR  MISSED APPROACH: Climb to 5000 on track 180° to ZUPIN and on track 180° to HARUB and on track 180° to JAGUR and on track 223° to JEPOB and hold.

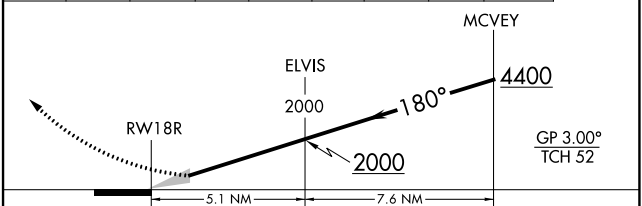
MEMPHIS APP CON	MEMPHIS TOWER	GND CON
<b>119.1 291.6</b> (176°-355°)	<b>118.3 257.8</b> (Rwy 9-27)	<b>121.0 379.2</b> (Rwy 9-27)
<b>125.8 338.3</b> (356°-175°)	<b>119.7 257.8</b> (Rwys 18C-36C, 18L-36R)	<b>121.9 379.2</b> (Rwys 18C-36C, 18L-36R)
	<b>128.425 257.8</b> (Rwy 18R-36L)	<b>121.65 379.2</b> (Rwy 18R-36L)

D-ATIS  
**127.75**

CLNC DEL **125.2** CPDLC



ELEV 341	TDZE 295	5000	ZUPIN	HARUB	JAGUR	JEPOB
		↑	tr 180°	tr 180°	tr 180°	tr 223°



CATEGORY	A	B	C	D
RNP 0.14 DA	737/45		442 (400-7/8)	

## AUTHORIZATION REQUIRED

SE-1, 13 JUN 2024 to 11 JUL 2024

SE-1, 13 JUN 2024 to 11 JUL 2024