


RNAV (RNP) Y RWY 18C

MEMPHIS INTL (MEM)

APP CRS	Rwy Idg	11120
180°	TDZE	290
	Apt Elev	341

▼ For uncompensated Baro-VNAV systems, procedure NA below -10°C (14°F) or above 54°C (130°F). GPS required. For inop ALS, increase RNP 0.30* all Cats visibility to 1½ SM and RNP 0.30 all Cats visibility to 1½ SM. Simultaneous approach authorized. Use of FD or AP required during simultaneous operations.

MALSR

MISSED APPROACH: Climb to 5000 on track 180° to CEDEN on track 137° to KEEZE and hold, continue climb-in-hold to 5000. *Missed approach requires a minimum climb of 400 feet per NM to 1000.

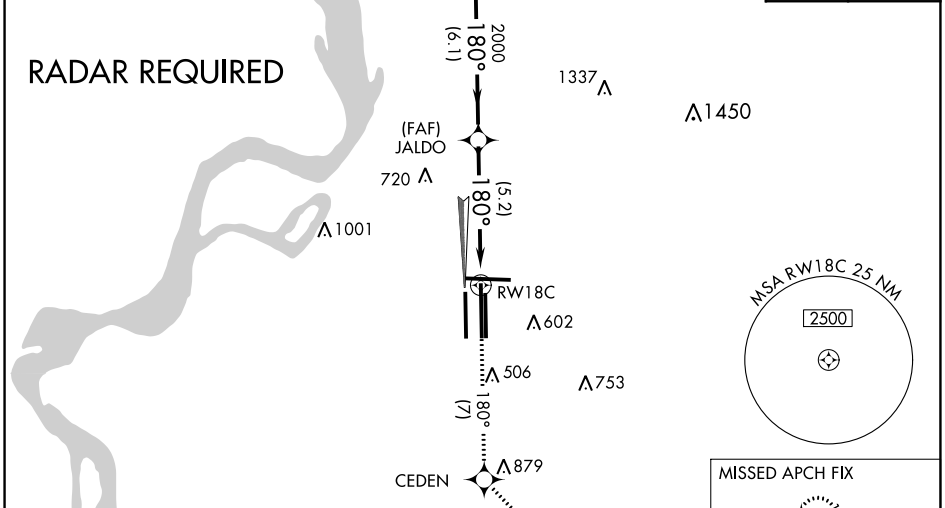
MEMPHIS APP CON	
119.1 291.6	(176°-355°)
125.8 338.3	(356°-175°)

MEMPHIS TOWER	
(Rwy 9-27)	118.3 257.8
(Rwys 18C-36C, 18L-36R)	119.7 257.8
(Rwy 18R-36L)	128.425 257.8

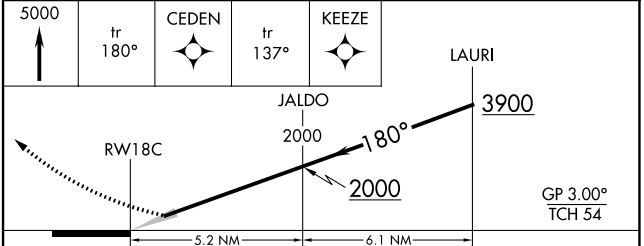
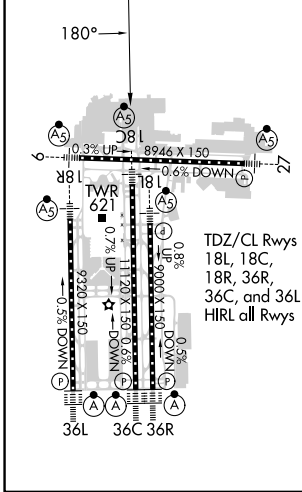
GND CON	
(Rwy 9-27)	121.0 379.2
(Rwys 18C-36C, 18L-36R)	121.9 379.2
(Rwy 18R-36L)	121.65 379.2

D-ATIS
127.75

CLNC DEL	CPDLC
125.2	



ELEV	341	D	TDZE	290
------	------------	----------	------	------------



CATEGORY	A	B	C	D
RNP 0.30 DA*		655/35	365 (400-%)	
RNP 0.30 DA		747/54	457 (500-1)	

AUTHORIZATION REQUIRED

SE-1, 13 JUN 2024 to 11 JUL 2024

SE-1, 13 JUN 2024 to 11 JUL 2024