

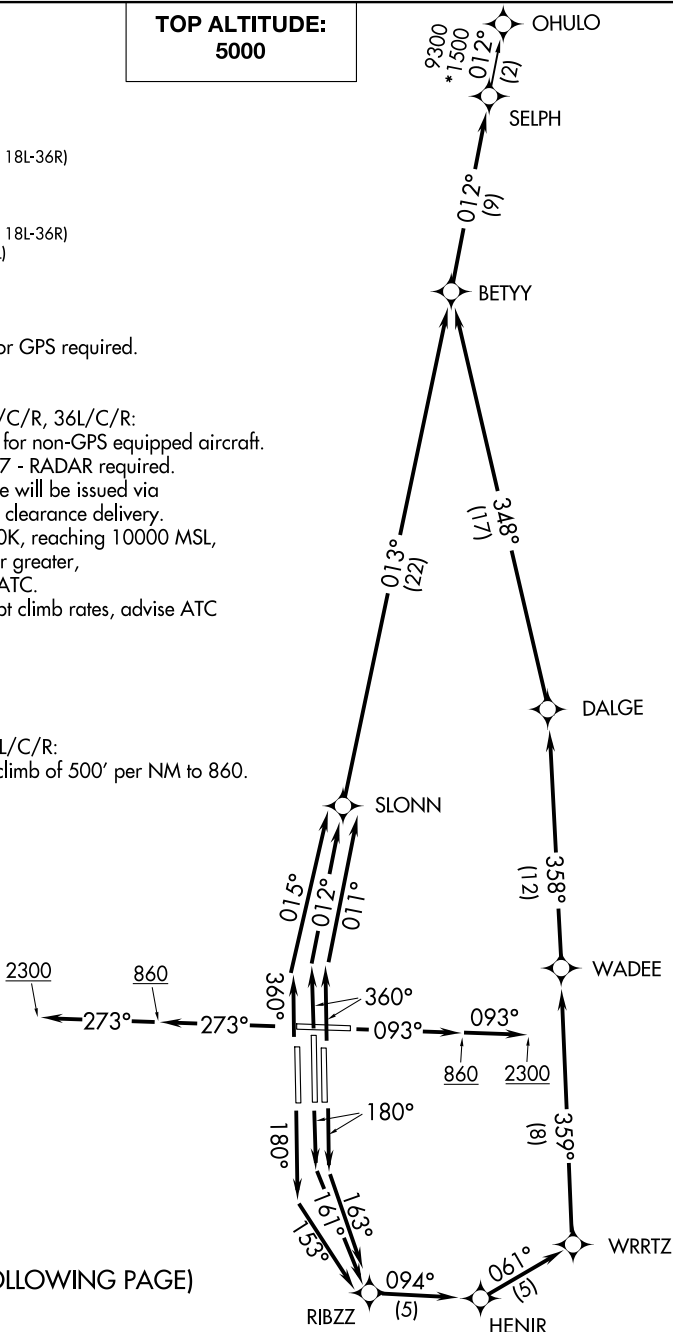
SELPH SEVEN DEPARTURE (RNAV)

**TOP ALTITUDE:
5000**

D-ATIS
127.75
CLINC DEL
125.2
CPDLC
GND CON
121.0 379.2 (Rwy 9-27)
121.9 379.2 (Rwys 18C-36C, 18L-36R)
121.65 379.2 (Rwy 18R-36L)
MEMPHIS TOWER
118.3 257.8 (Rwy 9-27)
119.7 257.8 (Rwys 18C-36C, 18L-36R)
128.425 257.8 (Rwy 18R-36L)
MEMPHIS DEP CON
124.15 385.45

- NOTE: DME/DME/IRU or GPS required.
- NOTE: RNAV 1.
- NOTE: Turbojets only.
- NOTE: Takeoff Rwy 18L/C/R, 36L/C/R:
RADAR required for non-GPS equipped aircraft.
- NOTE: Takeoff Rwy 9, 27 - RADAR required.
- NOTE: Transponder code will be issued via PDC or Memphis clearance delivery.
- NOTE: Accelerate to 250K, reaching 10000 MSL, maintain 250K or greater, if unable advise ATC.
- NOTE: If unable to accept climb rates, advise ATC on initial contact.

TAKEOFF MINIMUMS:
Rwy 9, 18L/C/R, 27, 36L/C/R:
Standard with minimum climb of 500' per NM to 860.



(NARRATIVE ON FOLLOWING PAGE)

NOTE: Chart not to scale.

SE-1, 13 JUN 2024 to 11 JUL 2024

SE-1, 13 JUN 2024 to 11 JUL 2024