

(WLDER.WLDER1) 23334  
**WLDER ONE ARRIVAL**

AL-253 (FAA)

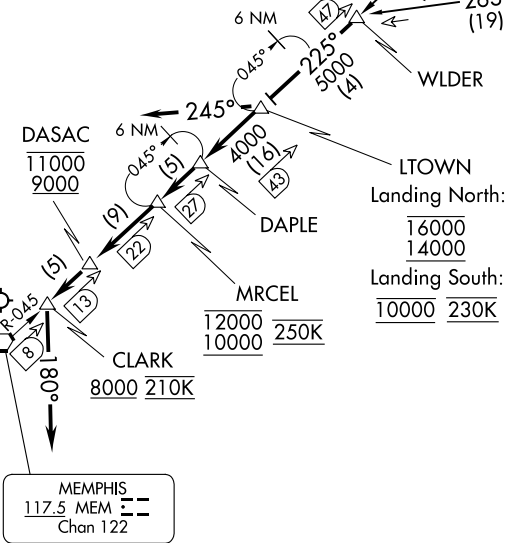
MEMPHIS INTL (MEM)  
 MEMPHIS, TENNESSEE

MEMPHIS APP CON  
 119.1 291.6 (176°-355°)  
 125.8 338.3 (356°-175°)  
 D-ATIS  
 127.75

POCKET CITY  
 113.3 PXV  
 Chan 80

NASHVILLE  
 114.1 BNA  
 Chan 88

MC KELLAR  
 114.85 MKL  
 Chan 95(Y)



- NOTE: DME and RADAR required.
- NOTE: Procedure NA for RNAV capable jets.
- NOTE: RNAV capable jets must file the BLUZZ RNAV STAR.
- NOTE: Maintain last assigned altitude until cleared to "Descend via the WLDER ONE", then comply with altitude restrictions as published.

(NARRATIVE ON FOLLOWING PAGE)

NOTE: Chart not to scale.

**WLDER ONE ARRIVAL**  
 (WLDER.WLDER1) 24MAR22

MEMPHIS, TENNESSEE  
 MEMPHIS INTL (MEM)

SE-1, 13 JUN 2024 to 11 JUL 2024

SE-1, 13 JUN 2024 to 11 JUL 2024