

(CUURT.CUURT1) 23166

AL-256 (FAA)

MIAMI-OPA LOCKA EXEC (OPF)

# CUURT ONE ARRIVAL (RNAV) Arrival Routes

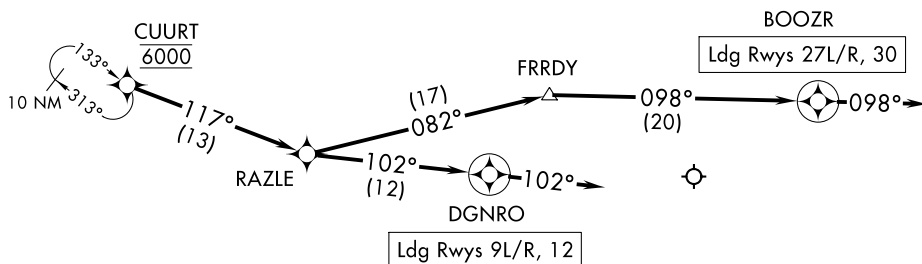
MIAMI, FLORIDA

RNAV 1 - DME/DME/IRU or GPS.

RADAR required.

MIAMI APP CON  
120.5 350.225  
ATIS  
125.9

NOTE: Jet aircraft only.  
NOTE: Landing east use Rwy 9L Transition, landing west use Rwy 27R Transition.  
Expect runway assignment from MIA approach prior to CUURT.  
NOTE: Between 2300L and 0700L expect Rwy 12.



SE-3, 13 JUN 2024 to 11 JUL 2024

SE-3, 13 JUN 2024 to 11 JUL 2024

NOTE: Chart not to scale.

## ARRIVAL ROUTE DESCRIPTION

From CUURT on track 117° to RAZLE.

**LANDING RUNWAYS 9L/R, 12:** From RAZLE on track 102° to DGNRO, then on track 102°. Expect RADAR vectors to final approach course.

**LANDING RUNWAYS 27L/R, 30:** From RAZLE on track 082° to FRRDY, then on track 098° to BOOZR, then on track 098°. Expect RADAR vectors to final approach course.

CUURT ONE ARRIVAL (RNAV) Arrival Routes  
(CUURT.CUURT1) 15JUN23

MIAMI, FLORIDA  
MIAMI-OPA LOCKA EXEC (OPF)