

LOC/DME I-OLX 111.55 Chan 52 (Y)	APP CRS 128°	Rwy Idg TDZE Apt Elev	6000 8 8
---	------------------------	-----------------------------	-------------------------------------

ILS or LOC RWY 12

MIAMI-OPA LOCKA EXEC (OPF)

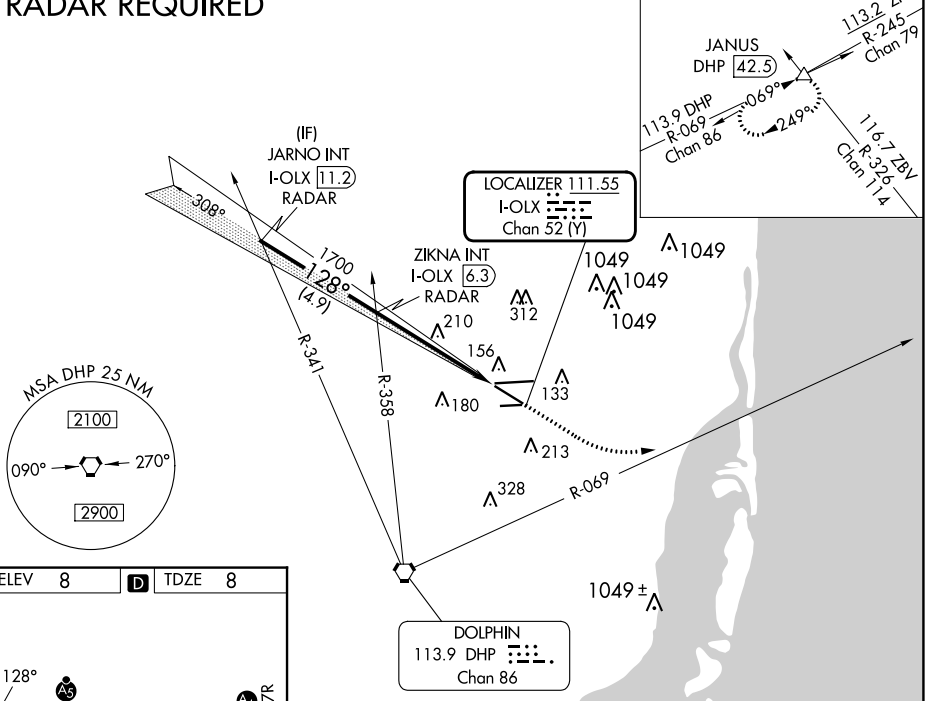
⚠ Inop table does not apply to S-ILS 12. Helicopter visibility reduction below 3/4 SM NA. VDP NA with Miami Intl altimeter setting. When local altimeter setting not received, use Miami Intl altimeter setting and increase all DA/MDA 20 feet and Circling Cat D visibility 1/4 SM. For inop MALSR, increase S-LOC 12 Cats A and B visibility to 1 mile and Cats C and D visibility to 1 1/8 miles.

MALSR
MISSED APPROACH: Climb to 800 then climbing left turn to 2000 on heading 090° and DHP VORTAC R-069 to JANUS INT/DHP 42.5 DME and hold.

ATIS 125.9	MIAMI APP CON 128.6 306.975	OPA LOCKA TOWER * 134.675 (CTAF) 0	GND CON 120.025	CLNC DEL 119.2	GCO 119.45
----------------------	---------------------------------------	--	---------------------------	--------------------------	----------------------

RADAR REQUIRED

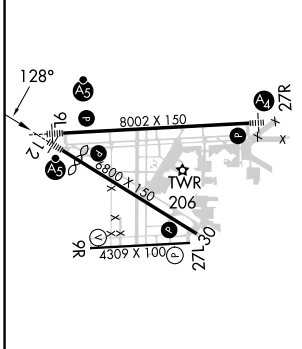
MISSED APCH FIX



SE-3, 13 JUN 2024 to 11 JUL 2024

SE-3, 13 JUN 2024 to 11 JUL 2024

ELEV 8	D	TDZE 8
--------	----------	--------



MIRA Rwy 9R-27L	HIRL Rwys 9L-27R and 12-30
FAF to MAP 5.2 NM	
Knots	60 90 120 150 180
Min:Sec	5:12 3:28 2:36 2:05 1:44

JARNO INT I-OLX 11.2 RADAR	ZIKNA INT I-OLX 6.3 RADAR	800	2000	DHP R-069	JANUS
1700		hdg 090°		*LOC only.	
GS 3.00° TCH 53		1700		*I-OLX 2.6 I-OLX 1.2	
4.9 NM		3.7 NM		1.5 NM	
CATEGORY	A	B	C	D	
S-ILS 12	208-3/4 200 (200-3/4)				
S-LOC 12	520-3/4 512 (600-3/4)		520-1 512 (600-1)		
CIRCLING	540-1 532 (600-1)		620-1 3/4 612 (700-1 3/4)		740-2 1/4 732 (800-2 1/4)