


| | | | |
|--|------------------------|-----------------------------|-------------------------------------|
| WAAS CH 69522 W12A | APP CRS 128° | Rwy Idg TDZE Apt Elev | 6000 8 8 |
|--|------------------------|-----------------------------|-------------------------------------|

RNAV (GPS) RWY 12

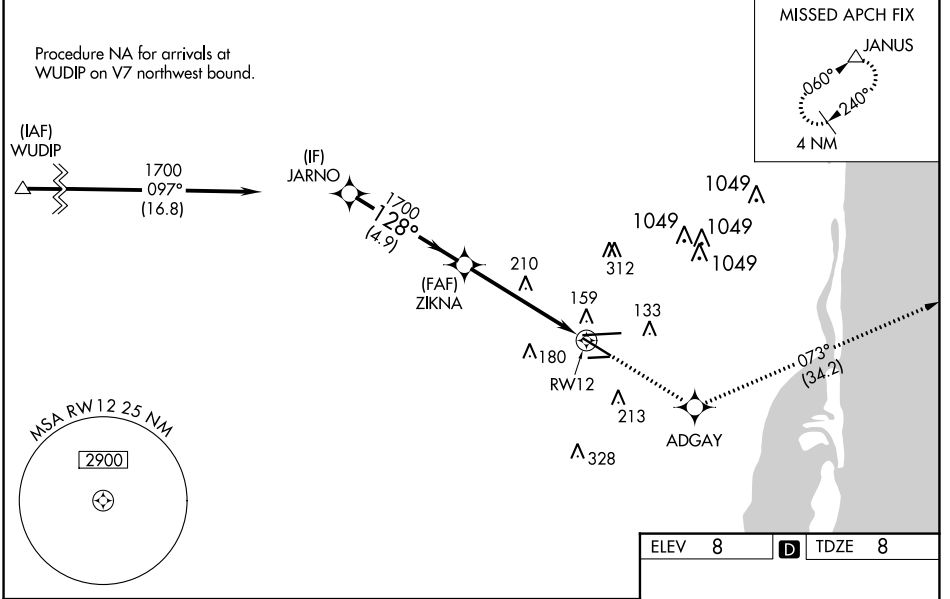
MIAMI-OPA LOCKA EXEC (OPF)

⚠ Baro-VNAV NA when using Miami Intl altimeter setting. For uncompensated Baro-VNAV systems, LNAV/VNAV NA below -1.5°C (5°F) or above 43°C (109°F). Helicopter visibility reduction below 3/4 SM NA. DME/DME RNP-0.3 NA. VDP NA with Miami Intl altimeter setting. When local altimeter setting not received, use Miami Intl altimeter setting and increase all DA/MDA 20 feet and Circling Cat D visibility 1/4 SM. Inop table does not apply. For inop MALSRL, increase LNAV/VNAV all Cats visibility and LNAV Cats A and B to 1 mile and LNAV Cats C and D visibility to 1 1/8 miles. For inop MALSRL, when using Miami Intl altimeter setting, increase LNAV/VNAV all Cats visibility and LNAV Cats A and B visibility to 1 mile.

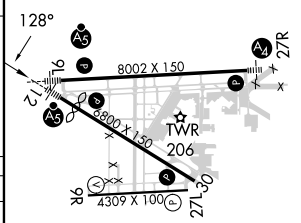
MALSRL


MISSED APPROACH:
Climb to 2000 direct ADGAY and on track 073° to JANUS and hold.

| | | | | | |
|----------------------|---------------------------------------|--|---------------------------|--------------------------|----------------------|
| ATIS 125.9 | MIAMI APP CON 128.6 306.975 | OPA LOCKA TOWER ★ 134.675 (CTAF) 0 | GND CON 120.025 | CLNC DEL 119.2 | GCO 119.45 |
|----------------------|---------------------------------------|--|---------------------------|--------------------------|----------------------|



| | | | |
|--|---------|--|---|
| ELEV 8 | | D TDZE 8 | |
| <p>JARNO</p> <p>1700</p> <p>GP 3.00° TCH 53</p> | | <p>ZIKNA</p> <p>1700</p> <p>*LNAV only.</p> | |
| <p>2000</p> <p>ADGAY</p> <p>tr 073°</p> <p>JANUS</p> | | <p>128°</p> <p>1700</p> <p>*1.5 NM to RW12</p> <p>RW12</p> | |
| <p>4.9 NM</p> | | <p>3.7 NM</p> <p>1.5 NM</p> | |
| CATEGORY | A | B | C |
| LPV DA | | 208-3/4 | 200 (200-3/4) |
| LNAV/VNAV DA | | 320-3/4 | 312 (400-3/4) |
| LNAV MDA | 520-3/4 | 512 (600-3/4) | 520-1 512 (600-1) |
| CIRCLING | 540-1 | 532 (600-1) | 620-1 3/4 612 (700-1 3/4) 740-2 1/4 732 (800-2 1/4) |



MIRL Rwy 9R-27L
 HIRL Rwys 9L-27R and 12-30 0

SE-3, 13 JUN 2024 to 11 JUL 2024

SE-3, 13 JUN 2024 to 11 JUL 2024