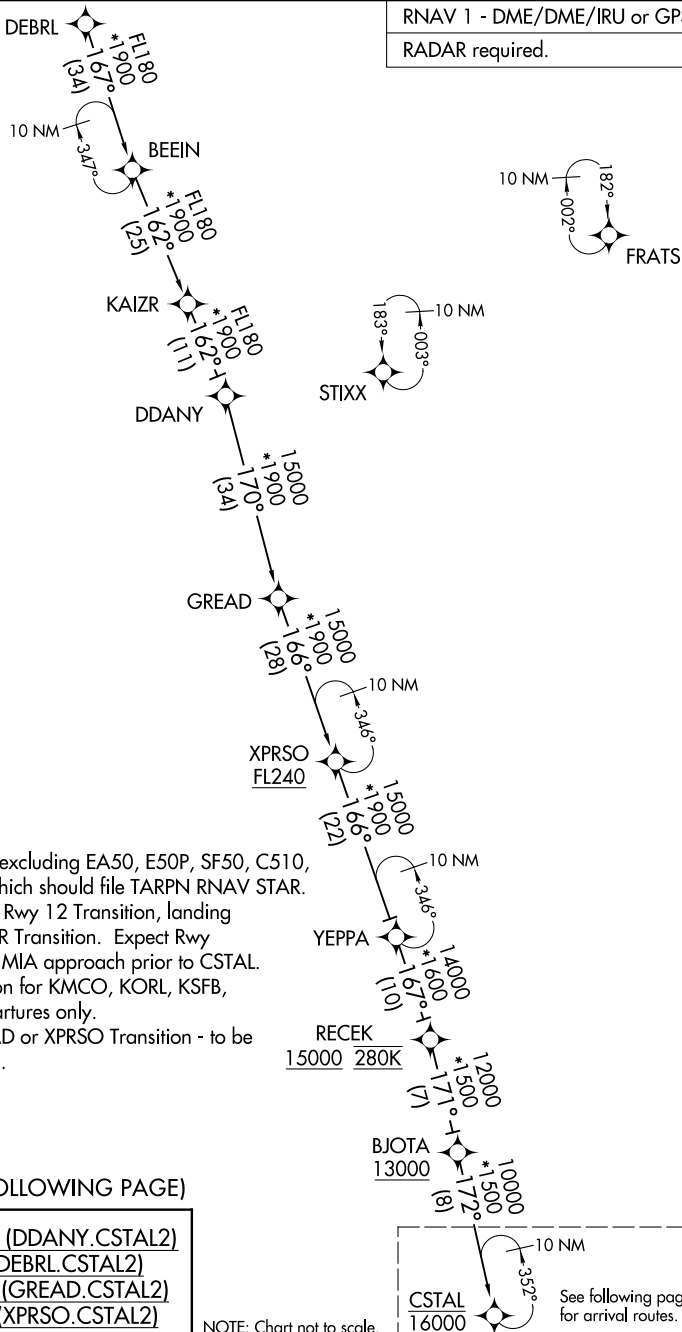


CSTAL TWO ARRIVAL (RNAV) Transition Routes

MIAMI, FLORIDA

MIAMI APP CON
 124.85 263.025
 KHST ATIS*
 132.275 269.9
 MIA D-ATIS
 119.15
 TMB ATIS
 124.0
 X51 AWOS-3
 118.375

RNAV 1 - DME/DME/IRU or GPS.
 RADAR required.



- NOTE: Jet aircraft only, excluding EA50, E50P, SF50, C510, C525 aircraft, which should file TARPIN RNAV STAR.
- NOTE: Landing east use Rwy 12 Transition, landing west use Rwy 26R Transition. Expect Rwy assignment from MIA approach prior to CSTAL.
- NOTE: DDANY Transition for KMCO, KORL, KSF6, KISM, KLEE departures only.
- NOTE: Do not file GREAD or XPRSO Transition - to be assigned by ATC.

(CONTINUED ON FOLLOWING PAGE)

DDANY TRANSITION (DDANY.CSTAL2)
DEBRL TRANSITION (DEBRL.CSTAL2)
GREAD TRANSITION (GREAD.CSTAL2)
XPRSO TRANSITION (XPRSO.CSTAL2)

NOTE: Chart not to scale.

See following page for arrival routes.

SE-3, 13 JUN 2024 to 11 JUL 2024

SE-3, 13 JUN 2024 to 11 JUL 2024