

# DVALL THREE ARRIVAL

MIAMI, FLORIDA

MIAMI APP CON  
 120.5 350.225  
 FLL D-ATIS  
 135.0  
 FXE ATIS  
 119.85  
 KHST ATIS ★  
 132.275 269.9  
 MIA D-ATIS  
 119.15  
 OPF ATIS  
 125.9  
 PMP ATIS  
 120.55  
 TMB ATIS  
 124.0

**WEVER  
 TURBOJET VERTICAL NAVIGATION  
 PLANNING INFORMATION**

Miami Intl landing East: Expect clearance to cross at 10000' and 250K.  
 Miami Intl landing West: Expect clearance to cross at 14000' and 250K.

LA BELLE  
 110.4 LBV  
 Chan 41

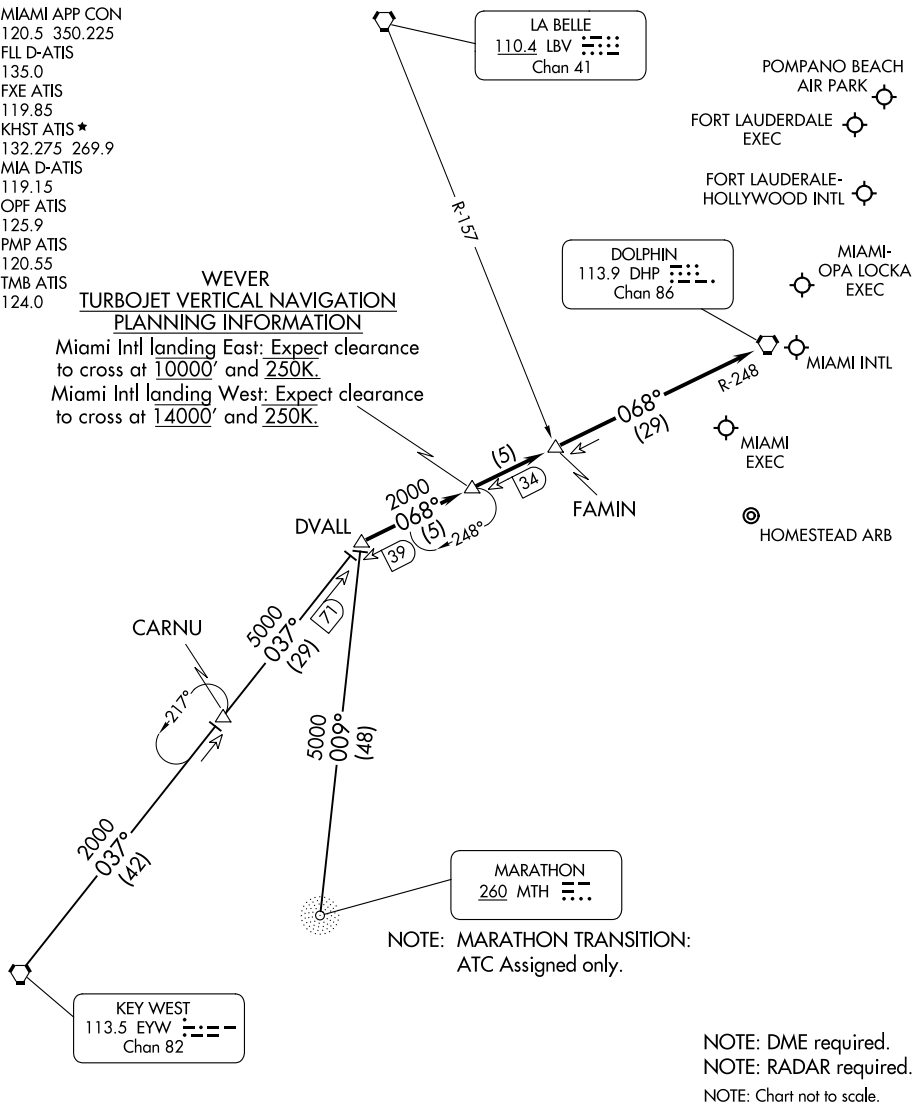
POMPANO BEACH AIR PARK  
 FORT LAUDERDALE EXEC  
 FORT LAUDERDALE-HOLLYWOOD INTL

DOLPHIN  
 113.9 DHP  
 Chan 86

MIAMI-OPA LOCKA EXEC

SE-3, 13 JUN 2024 to 11 JUL 2024

SE-3, 13 JUN 2024 to 11 JUL 2024



**KEY WEST TRANSITION (EYW.DVALL3):** From over EYW VORTAC on EYW R-037 to DVALL INT. Thence. . . .  
**MARATHON TRANSITION (MTH.DVALL3):** From over MTH NDB on bearing 009° to DVALL INT. Thence. . . .  
 . . . From over DVALL INT via DHP R-248 to DHP VORTAC. Expect RADAR vectors to final approach course after FAMIL INT.

# DVALL THREE ARRIVAL

MIAMI, FLORIDA