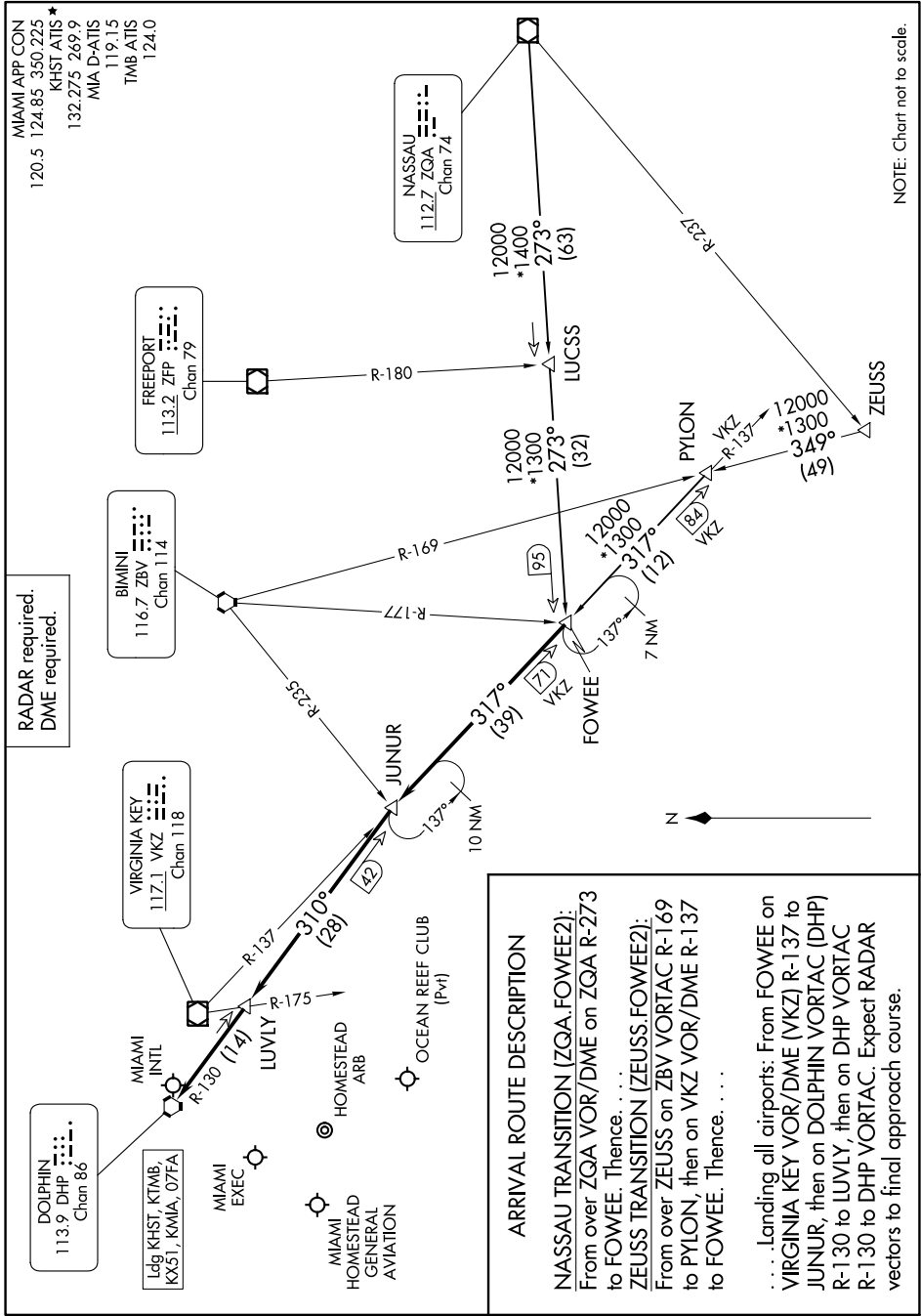


FOWEE TWO ARRIVAL



NOTE: Chart not to scale.

SE-3, 13 JUN 2024 to 11 JUL 2024

SE-3, 13 JUN 2024 to 11 JUL 2024

FOWEE TWO ARRIVAL

ARRIVAL ROUTE DESCRIPTION

NASSAU TRANSITION (ZQA.FOWEE2):
From over ZQA VOR/DME on ZQA R-273 to FOWEE. Thence. . . .

ZEISS TRANSITION (ZEUSS.FOWEE2):
From over ZEISS on ZBV VORTAC R-169 to PYLON, then on VKZ VOR/DME R-137 to FOWEE. Thence. . . .

. . . . Landing all airports: From FOWEE on VIRGINIA KEY VOR/DME (VKZ) R-137 to JUNIOR, then on DOLPHIN VORTAC (DHP) R-130 to LUVLY, then on DHP VORTAC R-130 to DHP VORTAC. Expect RADAR vectors to final approach course.