

# GLADZ THREE DEPARTURE (RNAV) Transition Routes

SE-3, 13 JUN 2024 to 11 JUL 2024

RNAV-1 DME/DME/IRU or GPS.  
RADAR required.

**TOP ALTITUDE:**  
**5000**

MIAMI DEP CON  
119.45 290.325 (Departing East)  
125.5 354.1 (Departing West)

D-ATIS  
133.675

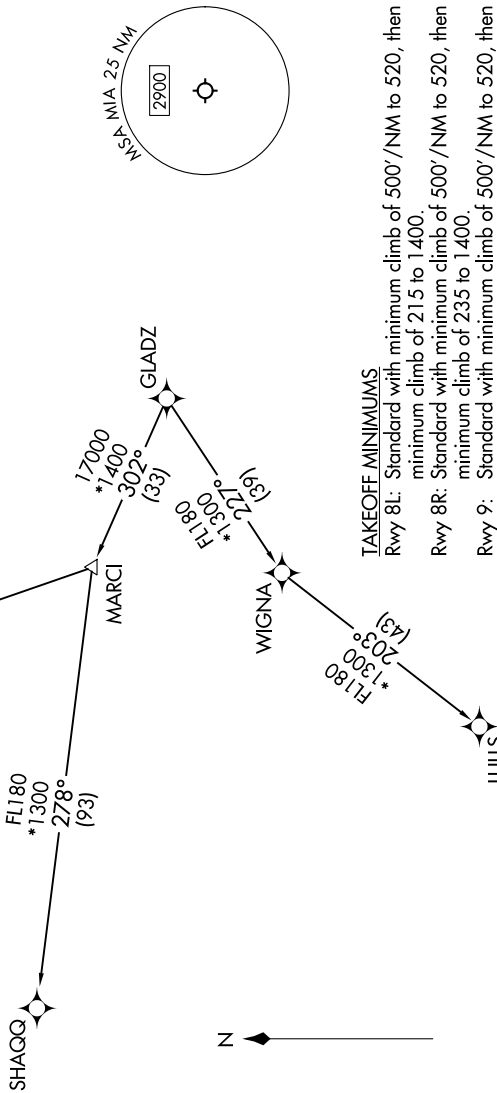
CLNC DEL  
135.35

CPDLC

GND CON  
(Rvys 8L/R, 12, 26L/R) 121.8 348.6  
(Rvys 9, 27, 30) 127.5 348.6

MIAMI TOWER  
118.3 256.9

NOTE: Jet aircraft only.  
NOTE: Accelerate to 250K until leaving 10000, if unable, advise ATC.  
NOTE: SHAGQ and BAGGS transitions ATC assigned except aircraft departing MIA.



**TAKEOFF MINIMUMS**

Rwy 8L: Standard with minimum climb of 500'/NM to 520, then minimum climb of 215 to 1400.

Rwy 8R: Standard with minimum climb of 500'/NM to 520, then minimum climb of 235 to 1400.

Rwy 9: Standard with minimum climb of 500'/NM to 520, then minimum climb of 240 to 1400.

Rwy 12: Standard with minimum climb of 500'/NM to 520, then minimum climb of 230 to 1400.

Rvys 26L/R, 27, 30: Standard with minimum climb of 500'/NM to 520.

(CONTINUED ON FOLLOWING PAGE)

NOTE: Chart not to scale.

SE-3, 13 JUN 2024 to 11 JUL 2024