

LOC/DME I-VIN <b>109.1</b> Chan 28	APP CRS <b>272°</b>	Rwy Idg <b>10220</b> TDZE <b>9</b> Apt Elev <b>9</b>
--	------------------------	--

# ILS or LOC RWY 26L

MIAMI INTL (MIA)

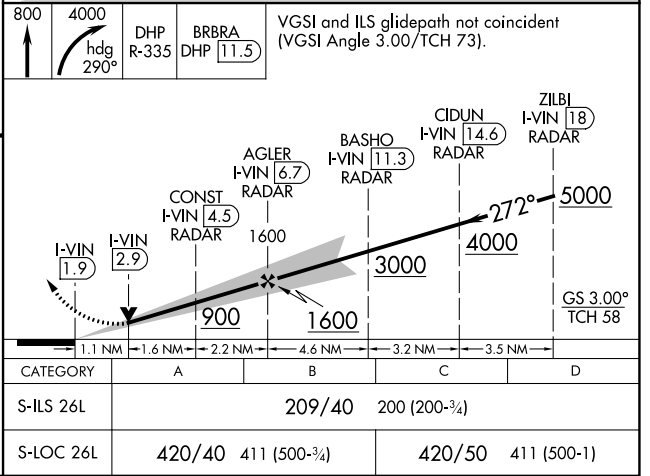
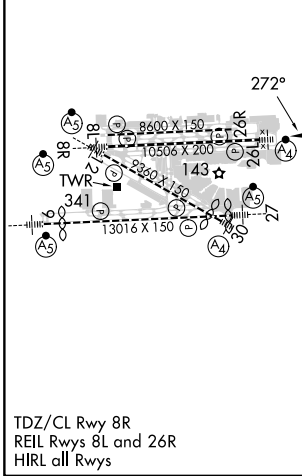
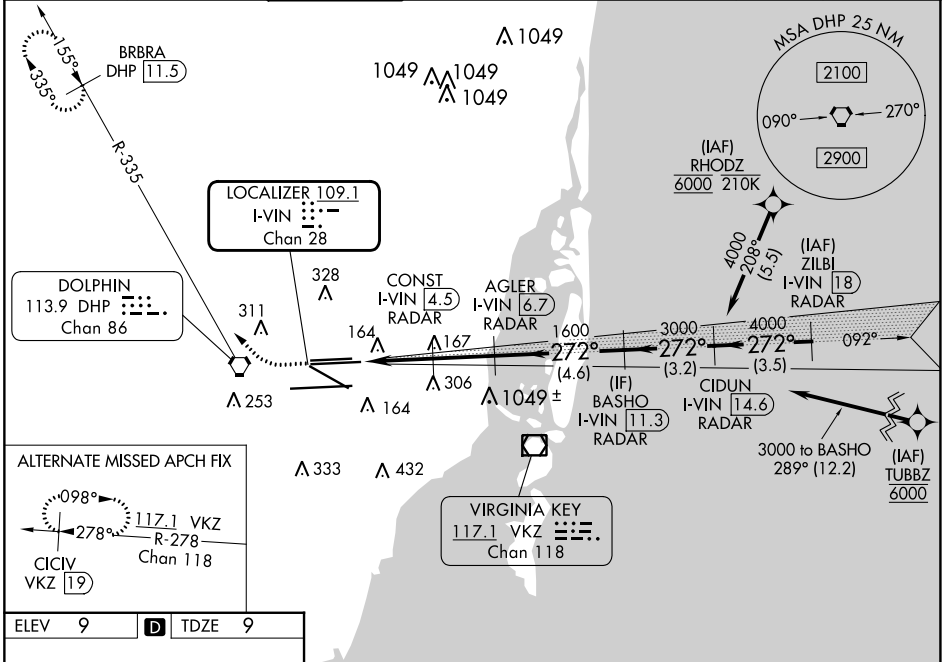
DME required. RNP APCH-GPS. From RHODZ, TUBBZ.

Simultaneous approach authorized. Inop table does not apply to S-ILS 26L all Cats. For inop ALS, increase S-LOC 26L Cats C/D visibility to RVR 6000.

MALSF

MISSED APPROACH: Climb to 800 then climbing right turn to 4000 on heading 290° and DHP VORTAC R-335 to BRBRA/DHP 11.5 DME and hold, continue climb-in-hold to 4000.

D-ATIS ARR <b>119.15</b> DEP <b>133.675</b>	MIAMI APP CON <b>124.85 322.3</b>	MIAMI TOWER <b>118.3 256.9</b>	GND CON <b>121.8</b> (Rwys 8L/R, 12, 26L/R) <b>127.5</b> (Rwys 9, 27, 30)	CINC DEL <b>348.6</b>	CPDLC
---	--------------------------------------	-----------------------------------	---	--------------------------	-------



SE-3, 13 JUN 2024 to 11 JUL 2024

SE-3, 13 JUN 2024 to 11 JUL 2024