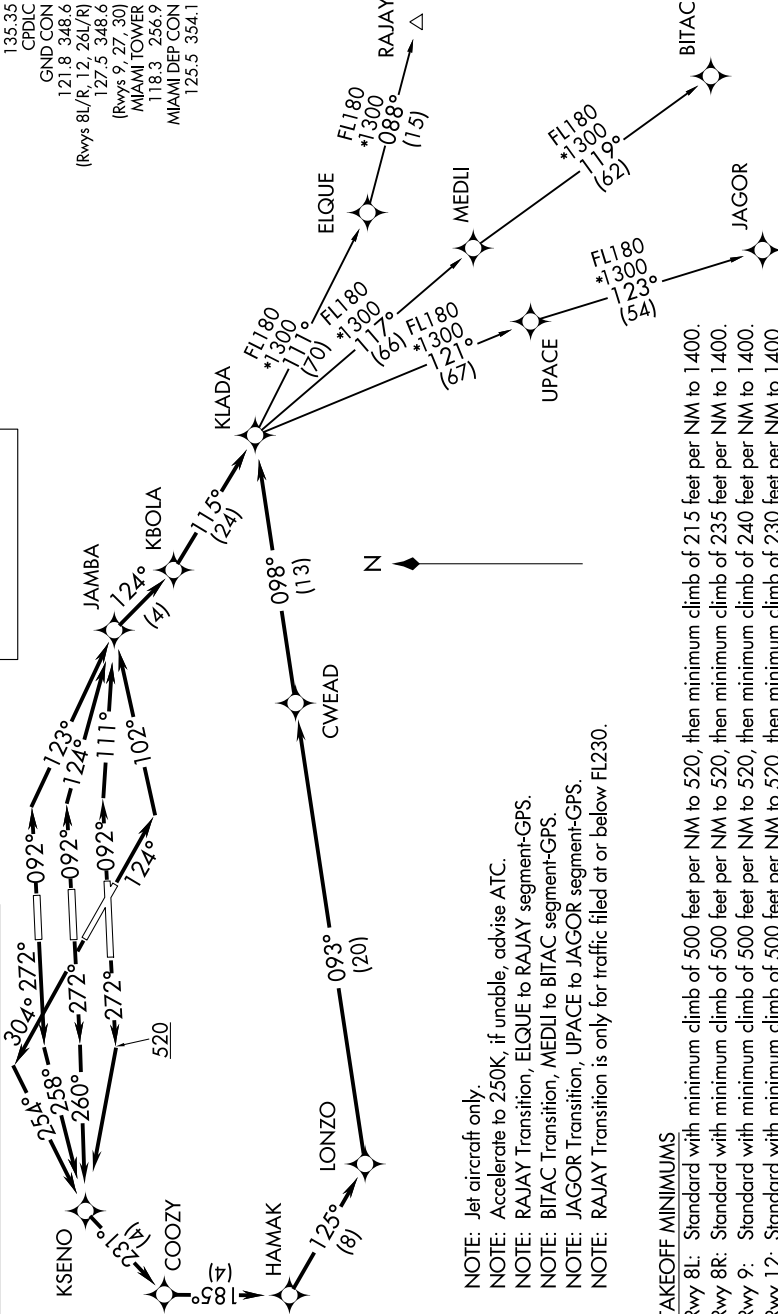


KLADA TWO DEPARTURE (RNAV)

D-ATIS
133.675
CINC DEL
135.35
CPDIC
GND CON
121.8 348.6
(Rwys 8L/R, 12, 26L/R)
127.5 348.6
(Rwys 9, 27, 30)
MIAMI TOWER
118.3 256.9
MIAMI DEP CON
125.5 354.1

**TOP ALTITUDE:
5000**

RNAV 1 - DME/DME/IRU or GPS.
RADAR required for non-GPS equipped aircraft.



NOTE: Jet aircraft only.

NOTE: Accelerate to 250K, if unable, advise ATC.

NOTE: RAJAY Transition, ELQUE to RAJAY segment-GPS.

NOTE: BITAC Transition, MEDLI to BITAC segment-GPS.

NOTE: JAGOR Transition, UPACE to JAGOR segment-GPS.

NOTE: RAJAY Transition is only for traffic filed at or below FL230.

TAKEOFF MINIMUMS

- Rwy 8L: Standard with minimum climb of 500 feet per NM to 520, then minimum climb of 215 feet per NM to 1400.
- Rwy 8R: Standard with minimum climb of 500 feet per NM to 520, then minimum climb of 235 feet per NM to 1400.
- Rwy 9: Standard with minimum climb of 500 feet per NM to 520, then minimum climb of 240 feet per NM to 1400.
- Rwy 12: Standard with minimum climb of 500 feet per NM to 520, then minimum climb of 230 feet per NM to 1400.
- Rwys 26L/R, 27, 30: Standard with minimum climb of 500 feet per NM to 520.

NOTE: Chart not to scale.

(NARRATIVE ON FOLLOWING PAGE)