

MIAMI, FLORIDA

AL-257 (FAA)

24137

WAAS CH 86903 W26A	APP CRS 272°	Rwy Idg 8600 TDZE 9 Apt Elev 9
---------------------------------	------------------------	---

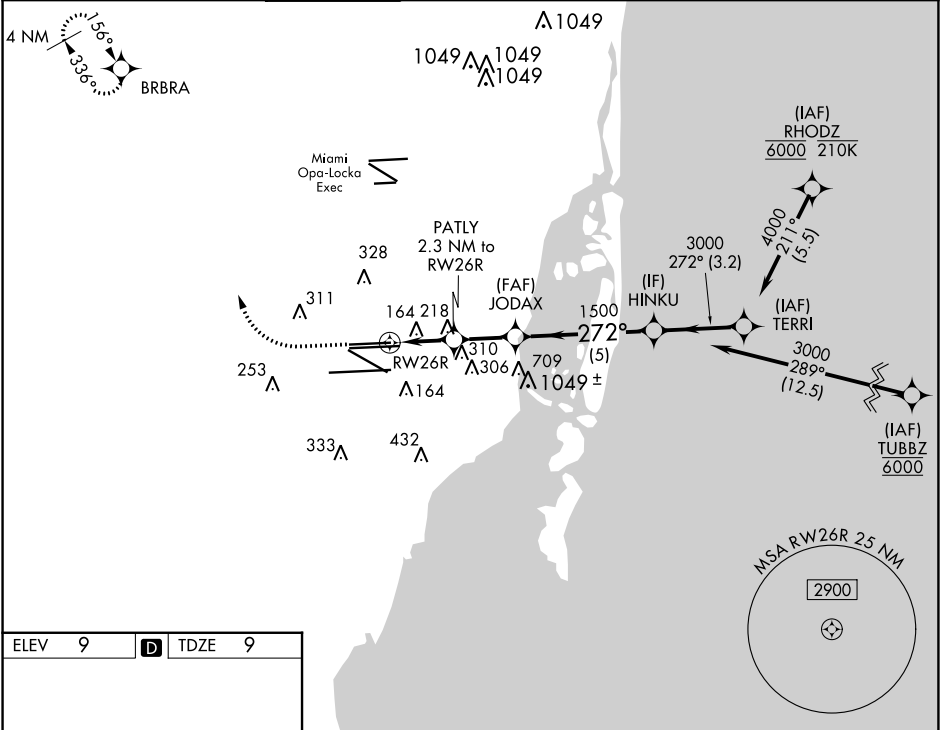
RNAV (GPS) RWY 26R

MIAMI INTL (MIA)

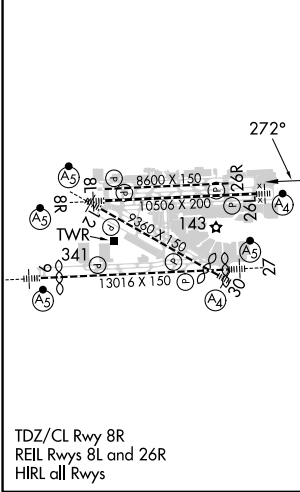
RNP APCH - GPS. MISSED APPROACH: Climb to 800 then climbing right turn to 4000 direct BRBRA and hold, continue climb-in-hold to 4000.

Simultaneous approach authorized. LNAV procedure NA during simultaneous operations. Use of FD or AP required during simultaneous operations. For uncompensated Baro-VNAV systems, LNAV/VNAV NA below 9°C or above 54°C.

D-ATIS ARR 119.15 DEP 133.675	MIAMI APP CON 124.85 322.3	MIAMI TOWER 118.3 256.9	GND CON 121.8 (Rwys 8L/R, 12, 26L/R) 127.5 (Rwys 9, 27, 30)	348.6	CLNC DEL 135.35	CPDLC
---	--------------------------------------	-----------------------------------	---	--------------	---------------------------	-------



ELEV 9	D	TDZE 9
--------	----------	--------



800	4000	BRBRA				
PATLY 2.3 NM to RW26R		JODAX 1500	HINKU 3000	TERRI 4000	GP 3.00° TCH 60	
1.3 NM to RW26R		1500	3000	272°	4000	
RW26R		800	1500			
1.3		1	2.2	5	3.2	
CATEGORY	A	B	C	D		
LPV DA	DA	265-3/4		256 (300-3/4)		
LNAV/VNAV DA	DA	432-1 1/4		423 (500-1 1/4)		
LNAV MDA	480-1	471 (500-1)		480-1 3/8 471 (500-1 3/8)		

MIAMI, FLORIDA
Amdt 5 14JUL22

25°48'N-80°17'W

RNAV (GPS) RWY 26R

MIAMI INTL (MIA)

SE-3, 13 JUN 2024 to 11 JUL 2024

SE-3, 13 JUN 2024 to 11 JUL 2024