

APP CRS	Rwy Idg	7913
305°	TDZE	8
	Apt Elev	9

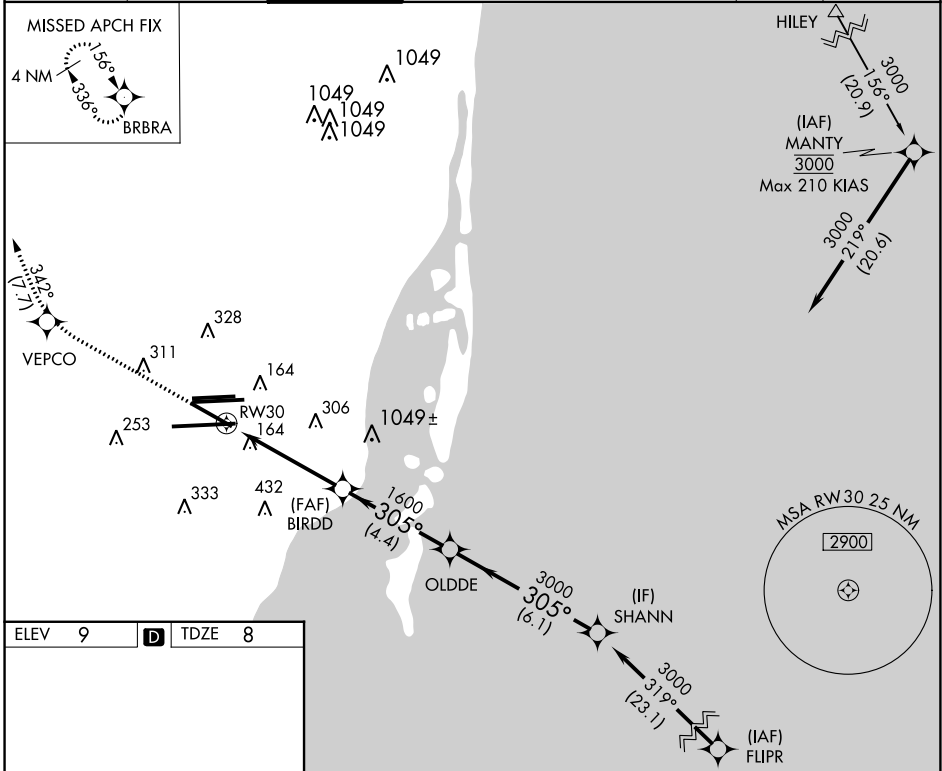
RNAV (RNP) Y RWY 30

MIAMI INTL (MIA)

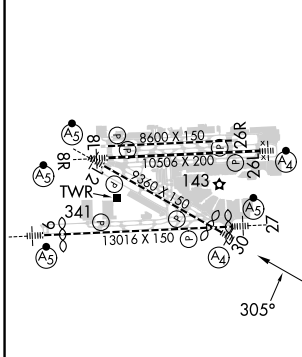
NA For inoperative MALS, increase RNP 0.23 all Cats visibility to 1½, RNP 0.30 all Cats to 1¾. GPS Required.
For uncompensated Baro-VNAV systems, procedure NA below 6°C (42°F) or above 48°C (119°F).

MALS
MISSED APPROACH: Climb to 3000 direct VEPCO and via 342° track to BRBRA and hold.

D-ATIS	MIAMI APP CON	MIAMI TOWER	GND CON	CLNC DEL	CPDLC
ARR 119.15	124.85 322.3	118.3 256.9	121.8 (8L/8R/12/26L/26R)	135.35	
DEP 133.675			127.5 (9/27/30)	348.6	

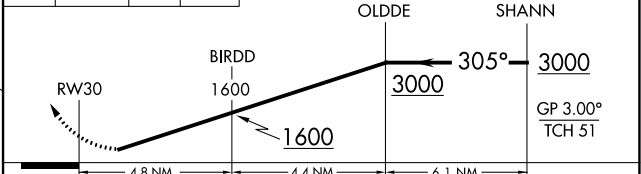


ELEV	9	D	TDZE	8
------	----------	----------	------	----------



TDZ/CL Rwy 8R
REIL Rwy 8L and 26R
HIRL all Rwy

3000 VEPCO 342° tr BRBRA VGSi and RNAV glidepath not coincident (VGSi Angle 3.00/TCH 71). Procedure Turn NA



CATEGORY	A	B	C	D
RNP 0.23 DA		426-1¼	418 (500-1¼)	
RNP 0.30 DA		521-1½	513 (600-1½)	

AUTHORIZATION REQUIRED

SE-3, 13 JUN 2024 to 11 JUL 2024

SE-3, 13 JUN 2024 to 11 JUL 2024