

MIAMI, FLORIDA

AL-257 (FAA)

24137

WAAS CH 40205 W27A	APP CRS 272°	Rwy Idg 12755 TDZE 9 Apt Elev 9
--	------------------------	--

RNAV (GPS) Y RWY 27

MIAMI INTL (MIA)

RNP APCH-GPS

Simultaneous approach authorized. LNAV procedure NA during simultaneous operations. Use of FD or AP required during simultaneous operations. For uncompensated Baro-VNAV systems, LNAV/VNAV NA below 8°C or above 54°C. *RVR 1800 authorized with use of FD or AP or HUD to DA.

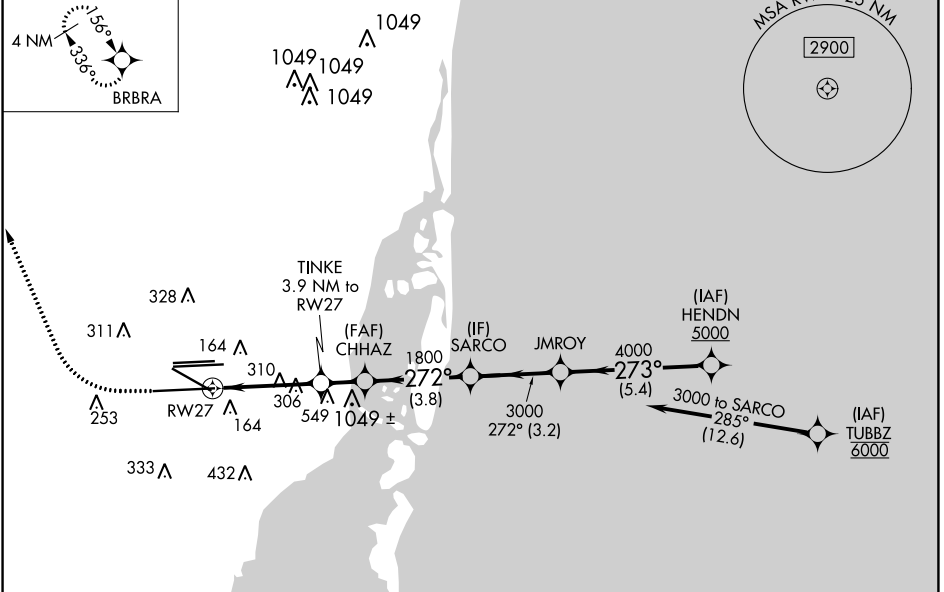
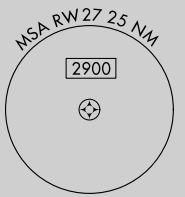
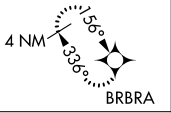
MALSR



MISSED APPROACH: Climb to 800 then climbing right turn to 4000 direct BRBRA and hold, continue climb-in-hold to 4000.

D-ATIS ARR 119.15 DEP 133.675	MIAMI APP CON 124.85 322.3	MIAMI TOWER 118.3 256.9	GND CON 121.8 (8L/8R/12/26L/26R) 127.5 (9/27/30)	348.6	CLNC DEL 135.35	CPDLC
---	--------------------------------------	-----------------------------------	--	--------------	---------------------------	-------

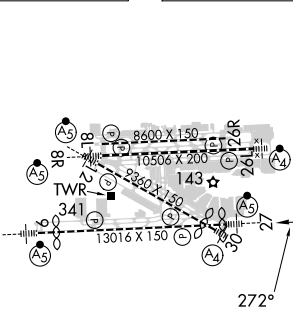
MISSED APCH FIX



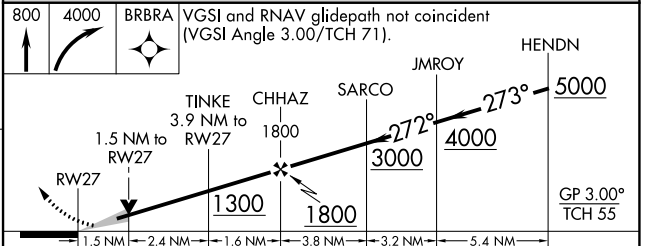
SE-3, 13 JUN 2024 to 11 JUL 2024

SE-3, 13 JUN 2024 to 11 JUL 2024

ELEV 9	D	TDZE 9
---------------	----------	---------------



TDZ/CL Rwy 8R
REIL Rwy 8L and 26R
HIRL all Rwy



800	4000	BRBRA	VGSi and RNAV glidepath not coincident (VGSi Angle 3.00°/TCH 71).	
			TINKE 3.9 NM to RWY 27	CHHAZ 1800
			SARCO 3000	JMROY 3000
			HENDN 5000	
			GP 3.00°	TCH 55
1.5 NM	2.4 NM	1.6 NM	3.8 NM	3.2 NM
5.4 NM				
CATEGORY	A	B	C	D
LPV DA*	209/24		200 (200-1/2)	
LNAV/VNAV DA	439/40		430 (500-3/4)	
LNAV MDA	560/24	551 (600-1/2)	560/60	551 (600-1/4)

MIAMI, FLORIDA
Amdt 4 12AUG21

25°48'N-80°17'W

RNAV (GPS) Y RWY 27

MIAMI INTL (MIA)