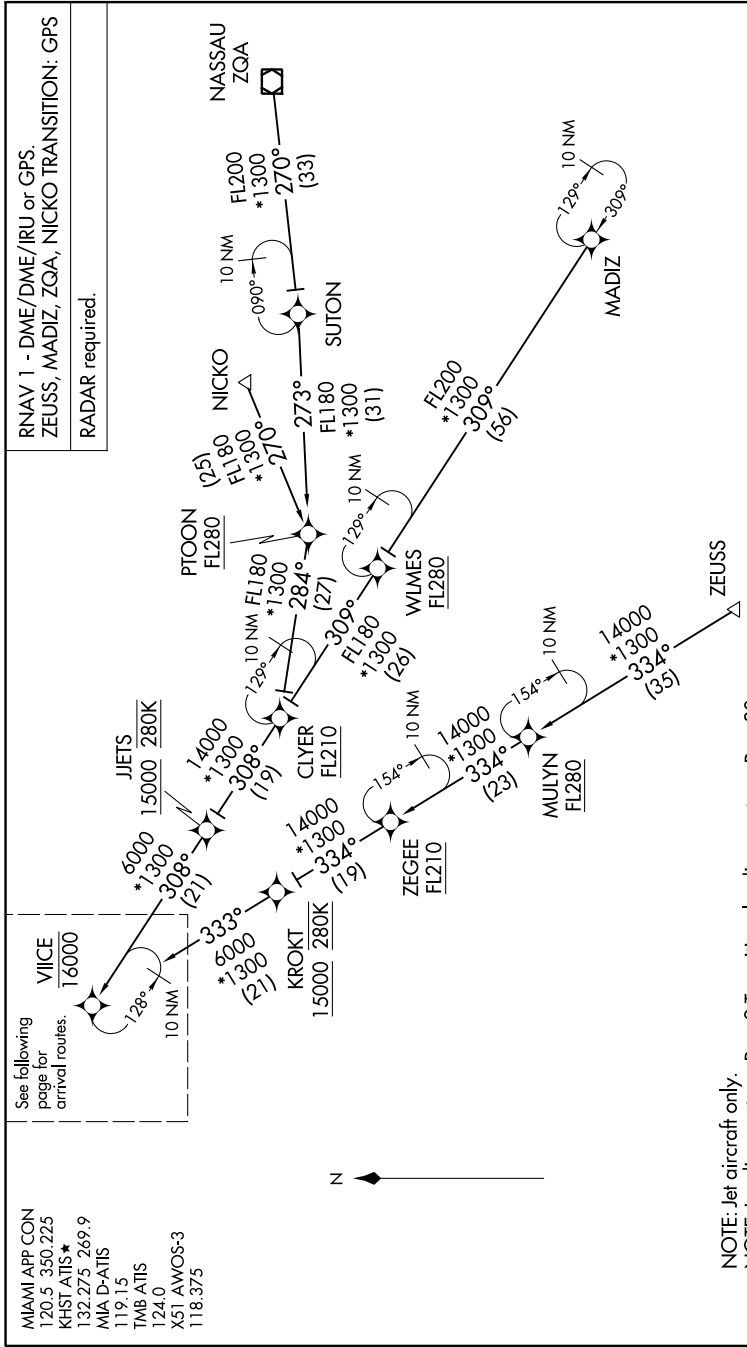


VIICE TWO ARRIVAL (RNAV) Transition Routes

MIAMI, FLORIDA

SE-3, 13 JUN 2024 to 11 JUL 2024



See following page for arrival routes.

- MIAMI APP CON 120.5 350.225
- KHST ATIS \* 132.275 269.9
- MIA D-ATIS 119.15
- TMB ATIS 124.0
- X51 AMOS-3 118.375

RNAV 1 - DME/DME/IRU or GPS.  
 ZEUSS, MADIZ, ZQA, NICKO TRANSITION: GPS  
 RADAR required.

MADIZ TRANSITION (MADIZ.VIICE2)  
 NASSAU TRANSITION (ZQA.VIICE2)  
 NICKO TRANSITION (NICKO.VIICE2)  
 PTOON TRANSITION (PTOON.VIICE2)  
 ZEGEE TRANSITION (ZEGEE.VIICE2)  
 ZEUSS TRANSITION (ZEUSS.VIICE2)

NOTE: Jet aircraft only.  
 NOTE: Landing east use Rwy 9 Transition, landing west use Rwy 30 Transition. Expect Rwy assignment from MIA approach prior to VIICE.  
 NOTE: Do not file PTOON or ZEGEE Transition - to be assigned by ATC.

(CONTINUED ON FOLLOWING PAGE)

NOTE: Chart not to scale.

VIICE TWO ARRIVAL (RNAV) Transition Routes

MIAMI, FLORIDA

SE-3, 13 JUN 2024 to 11 JUL 2024