

HI-VOR or TACAN RWY 16R

VORTAC MAF 114.8 Chan 95	APCH CRS 183°	Rwy ldg TDZE Arprt Elev 9501 2872 2872
--	-------------------------	--

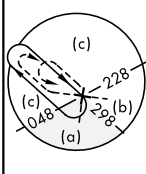
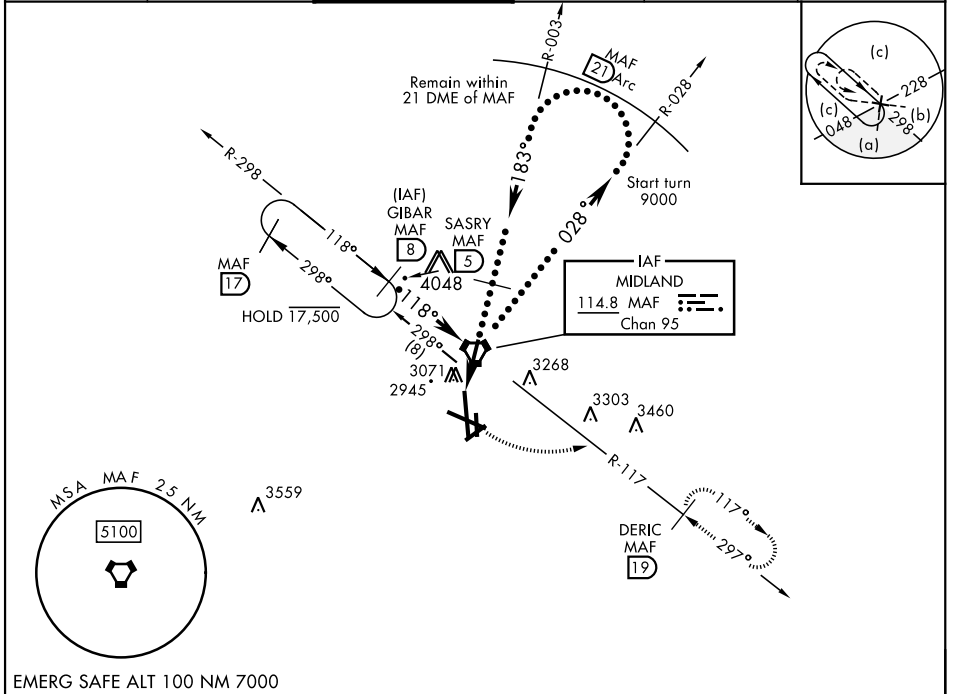
AL-258 [USAF] MIDLAND INTL AIR AND SPACE PORT (KMAF)

DME required.

▼ * Circling Rwy 16L NA at night.

MISSED APPROACH: Climb to 3500 then climbing left turn to 4800 on MAF VORTAC R-117 to DERIC/MAF 19° DME and hold.

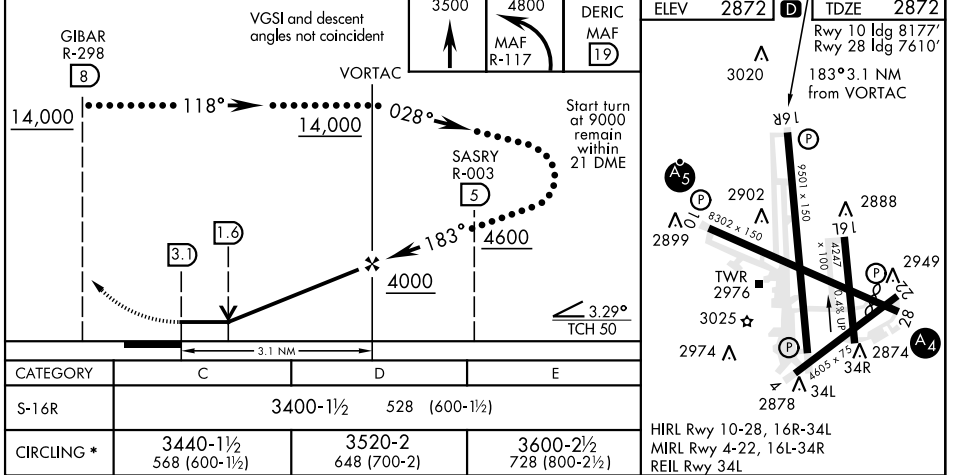
ATIS ★ 126.8 235.975	APP CON 124.6 290.4	TOWER ★ 118.7 (CTAF) 273.45	GND CON 121.9 348.6	CLNC DEL 118.05 317.65	UNICOM 122.95
--------------------------------	-------------------------------	---------------------------------------	-------------------------------	----------------------------------	-------------------------



SC-3, 13 JUN 2024 to 11 JUL 2024

SC-3, 13 JUN 2024 to 11 JUL 2024

EMERG SAFE ALT 100 NM 7000



MIDLAND, TEXAS 31° 57' N-102° 12' W MIDLAND INTL AIR AND SPACE PORT (KMAF)

Amtd 3 20JUL17

HI-VOR or TACAN RWY 16R