

VORTAC MAF <b>114.8</b> Chan <b>95</b>	APP CRS <b>183°</b>	Rwy Idg TDZE Apt Elev	<b>9501</b> <b>2872</b> <b>2872</b>
--	------------------------	-----------------------------	---

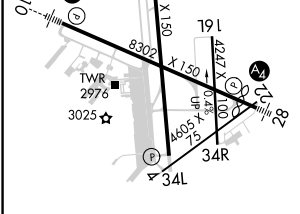
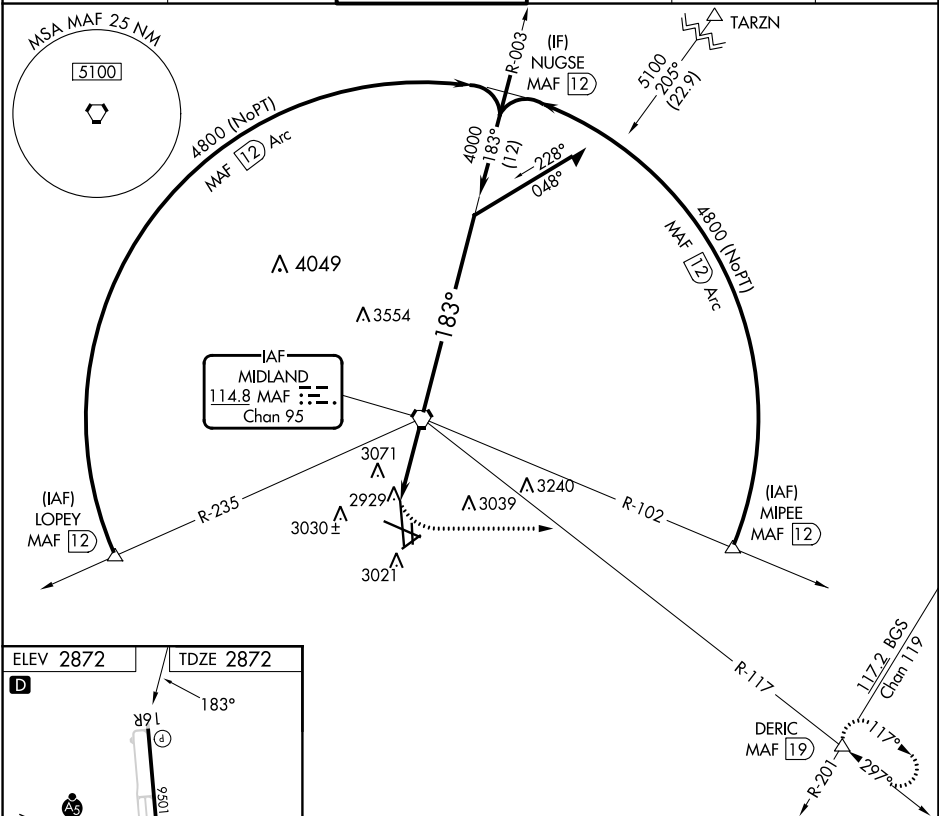
# VOR or TACAN RWY 16R

MIDLAND INTL AIR AND SPACE PORT (M.A.F.)

**⚠** Rwy 16R helicopter visibility reduction below 3/4 SM NA. Circling Rwy 16L NA at night.

MISSED APPROACH: Climbing left turn to 4800 on heading 090° and on MAF VORTAC R-117 to DERIC INT/MAF 19 DME and hold.

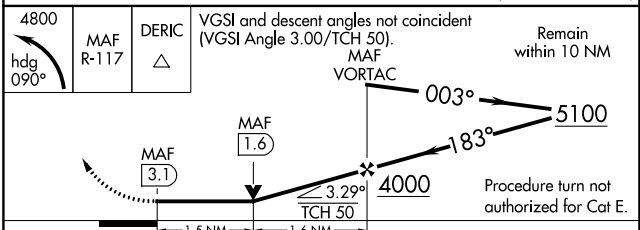
ATIS <b>126.8 235.975</b>	MIDLAND APP CON* <b>124.6 290.4</b>	MIDLAND TOWER* <b>118.7 (CTAF) 0273.45</b>	GND CON <b>121.9 348.6</b>	CLNC DEL <b>118.05 317.65</b>	UNICOM <b>122.95</b>
------------------------------	--	---	-------------------------------	----------------------------------	-------------------------



REIL Rwy 34L  
MIRL Rwys 4-22 and 16L-34R  
HIRL Rwys 10-28 and 16R-34L

FAF to MAP 3.1 NM

Knots	60	90	120	150	180
Min:Sec	3:06	2:04	1:33	1:14	1:02



CATEGORY	A	B	C	D	E
S-16R	3400-1	528 (600-1)	3400-1½	528 (600-1½)	
CIRCLING	3440-1	568 (600-1)	3440-1½ 568 (600-1½)	3520-2 648 (700-2)	3600-2½ 728 (800-2½)

SC-3, 13 JUN 2024 to 11 JUL 2024

SC-3, 13 JUN 2024 to 11 JUL 2024