

LOC/DME I-MKE 110.3 Chan 40	APP CRS 011°	Rwy Idg TDZE Apt Elev	1L 9080 704 728	1R 4182 678 728
--	------------------------	-----------------------------	---	---

ILS or LOC RWY 1L

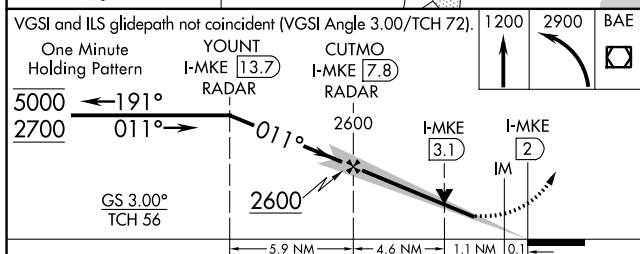
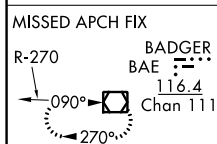
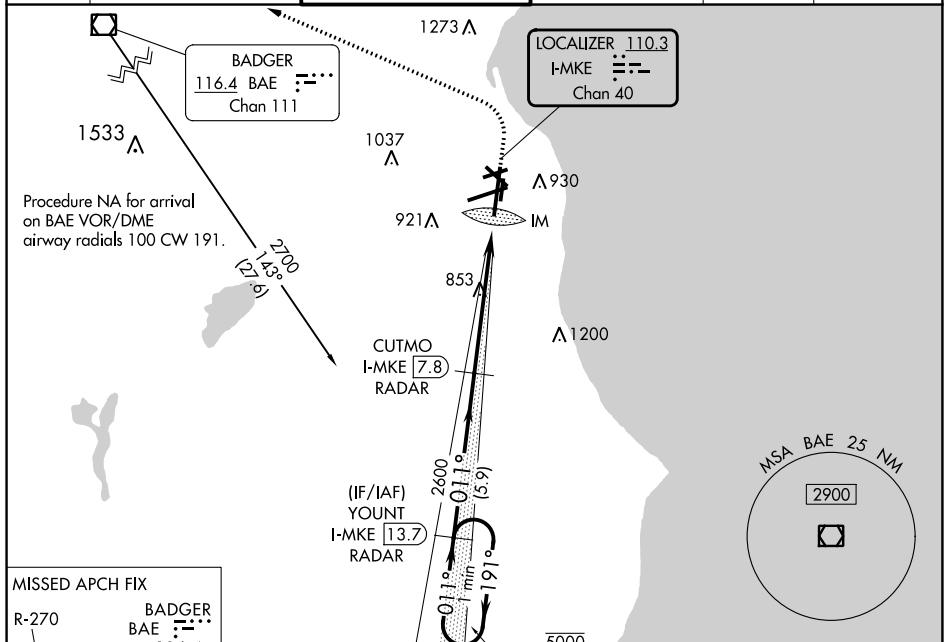
GENERAL MITCHELL INTL (MKE)

DME or RADAR required.

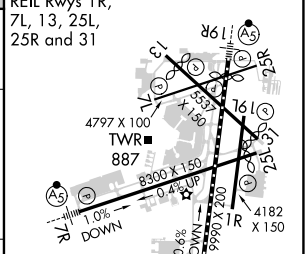


MISSED APPROACH: Climb to 1200 then climbing left turn to 2900 direct BAE VOR/DME and hold.

D-ATIS 126.4	MILWAUKEE APP CON 126.5 307.0	MILWAUKEE TOWER 124.575 269.05	GND CON 121.8 263.125	CLNC DEL 120.8	CPDLC
------------------------	---	--	---------------------------------	--------------------------	-------



ELEV 728	D	TDZE 1L 704
TDZ/CL Rwy 1L		TDZE 1R 678
REIL Rwys 1R, 7L, 13, 25L, 25R and 31		



CATEGORY	A	B	C	D
S-ILS 1L	904/18 200 (200-½)			
S-LOC 1L	1140/24	436 (500-½)	1140/40	436 (500-¾)
SIDESTEP 1R	1140-1	462 (500-1)	1140-1½	1140-2
			462 (500-1½)	462 (500-2)
C CIRCLING	1240-1	512 (600-1)	1240-1½	1360-2
			512 (600-1½)	632 (700-2)

HRL Rwys 1L-19R and 7R-25L					
MRL Rwys 1R-19L, 13-31, and 7L-25R					
FAF to MAP 5.8 NM					
Knots	60	90	120	150	180
Min:Sec	5:48	3:52	2:54	2:19	1:56

EC-3, 13 JUN 2024 to 11 JUL 2024

EC-3, 13 JUN 2024 to 11 JUL 2024