

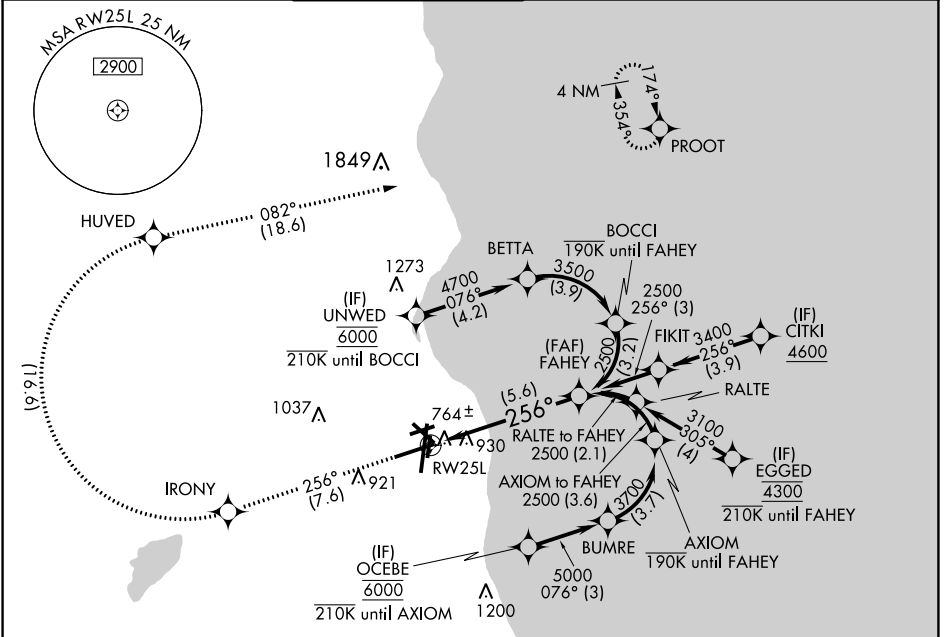
APP CRS	Rwy Idg	<b>7867</b>
<b>256°</b>	TDZE	<b>683</b>
	Apt Elev	<b>729</b>

# RNAV (RNP) Y RWY 25L

GENERAL MITCHELL INTL (MKE)

RF required. RNP AR APCH.		MISSED APPROACH: Climb to 3700 on the RNAV missed approach route to PROOT and hold.
▼ For uncompensated Baro-VNAV systems, procedure NA below -20°C or above 54°C.		

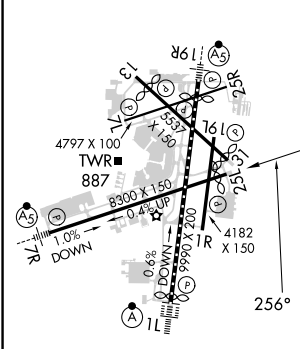
D-ATIS	MILWAUKEE APP CON	MILWAUKEE TOWER	GND CON	CLNC DEL	CPDLC
<b>126.4</b>	<b>126.5 307.0</b>	<b>124.575 269.05</b>	<b>121.8 263.125</b>	<b>120.8</b>	



EC-3, 13 JUN 2024 to 11 JUL 2024

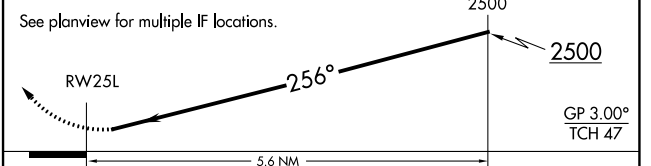
EC-3, 13 JUN 2024 to 11 JUL 2024

ELEV 729	<b>D</b>	TDZE 683
----------	----------	----------



TDZ/CL Rwy 1L  
 REIL Rws 1R, 7L,  
 13, 25R, 25L and 31  
 HIRL Rws 1L-19R and 7R-25L  
 MIRL Rws 1R-19L, 13-31 and 7L-25R

3700	IRONY	HUVED	PROOT
↑	◆	◆	◆



CATEGORY	A	B	C	D
RNP 0.10 DA		1087-1 <sup>3</sup> / <sub>8</sub>	404 (400-1 <sup>3</sup> / <sub>8</sub> )	
RNP 0.30 DA		1256-2	573 (600-2)	

## AUTHORIZATION REQUIRED