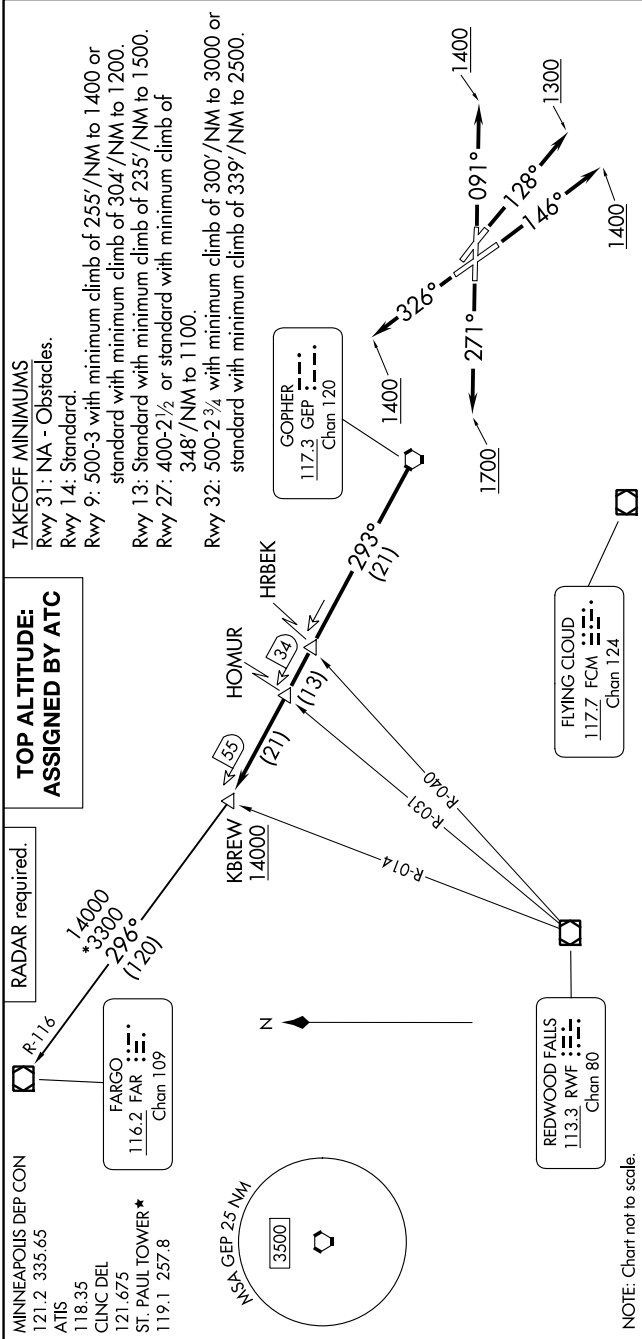


NC-1, 13 JUN 2024 to 11 JUL 2024



MINNEAPOLIS DEP CON
121.2 335.65
ATIS 118.35
CLNC DEL 121.675
ST. PAUL TOWER* 119.1 257.8

RADAR required.
R-116

FARGO
116.2 FAR
Chan 109

REDWOOD FALLS
113.3 RW
Chan 80

GOPHER
117.3 GEP
Chan 120

FLYING CLOUD
117.7 FCM
Chan 124

NSA GEP 2.5 NM
3500

**TOP ALTITUDE:
ASSIGNED BY ATC**

TAKEOFF MINIMUMS
Rwy 31: NA - Obstacles.
Rwy 14: Standard.
Rwy 9: 500-3 with minimum climb of 255'/NM to 1400 or standard with minimum climb of 304'/NM to 1200.
Rwy 13: Standard with minimum climb of 235'/NM to 1500.
Rwy 27: 400-2½ or standard with minimum climb of 348'/NM to 1100.
Rwy 32: 500-2¾ with minimum climb of 300'/NM to 3000 or standard with minimum climb of 339'/NM to 2500.

DEPARTURE ROUTE DESCRIPTION

TAKEOFF RUNWAY 9: Climb on heading 091° to 1400 for RADAR vectors to GEP VORTAC then on depicted route to KBREW, thence. . . .

TAKEOFF RUNWAY 13: Climb on heading 128° to 1300 for RADAR vectors to GEP VORTAC then on depicted route to KBREW, thence. . . .

TAKEOFF RUNWAY 14: Climb on heading 146° to 1400 for RADAR vectors to GEP VORTAC then on depicted route to KBREW, thence. . . .

TAKEOFF RUNWAY 27: Climb on heading 271° to 1700 for RADAR vectors to GEP VORTAC then on depicted route to KBREW, thence. . . .

TAKEOFF RUNWAY 32: Climb on heading 326° to 1400 for RADAR vectors to GEP VORTAC then on depicted route to KBREW, thence. . . .

. . . on transition. Maintain ATC assigned altitude. Expect filed altitude 10 minutes after departure.

FARGO TRANSITION (KBREW2.FAR): From over KBREW on FAR R-116 to FAR VOR/DME.

NC-1, 13 JUN 2024 to 11 JUL 2024