

WAAS CH 50123 W32A	APP CRS 326°	Rwy Idg TDZE Apt Elev	6109 704 705
--	------------------------	-----------------------------	---

RNAV (GPS) RWY 32

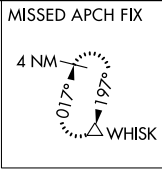
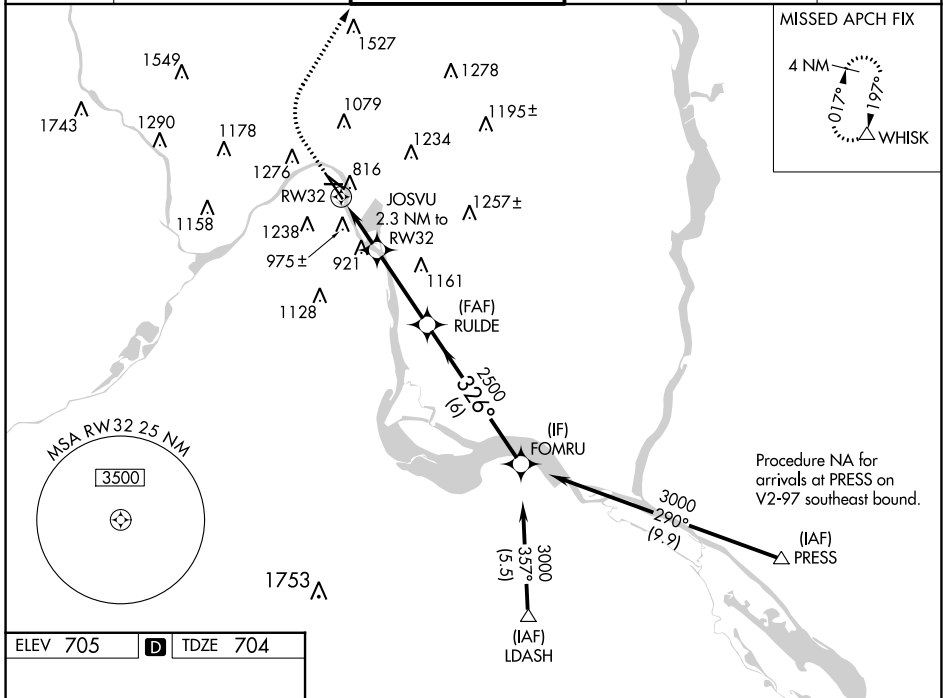
ST PAUL DOWNTOWN HOLMAN FLD (STP)

RNP APCH-GPS

▽ Rwy 32 helicopter visibility reduction below 3/4 SM NA.
▲ For uncompensated Baro-VNAV systems, LNAV/VNAV NA below -21°C or above 54°C.

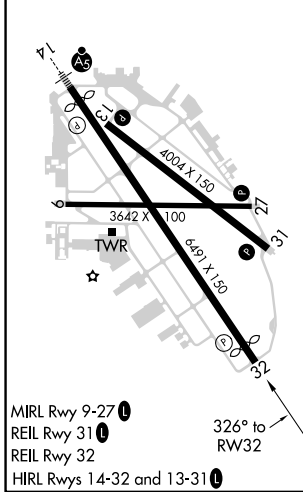
MISSED APPROACH: Climb to 1400 then climbing right turn to 3000 direct WHISK and hold.

ATIS 118.35	MINNEAPOLIS APP CON 121.2 335.65	ST. PAUL TOWER ★ 119.1(CTAF) 257.8	GND CON 121.675	CLNC DEL 121.675	UNICOM 122.95
-----------------------	--	--	---------------------------	----------------------------	-------------------------



Procedure NA for arrivals at PRESS on V2-97 southeast bound.

ELEV 705	D	TDZE 704
----------	----------	----------



1400	3000	WHISK	JOSVU 2.3 NM to RW32	RULDE 2500	FOMRU 3000	
			1.6 NM to RW32	2500	326°	
			1460	2500	GP 3.00° TCH 40	
			1.6 NM	0.7 NM	3.2 NM	6 NM
CATEGORY	A	B	C	D		
LPV DA		1031/50	327 (400-1)			
LNAV/VNAV DA		1258-1 5/8	554 (600-1 5/8)			
LNAV MDA	1240/55	536 (600-1)	1240-1 1/2	536 (600-1 1/2)		
C CIRCLING	1580-1 1/4	875 (900-1 1/4)	1580-2 1/2	875 (900-2 1/2)	1580-2 3/4	
			875 (900-2 3/4)			

NC-1, 13 JUN 2024 to 11 JUL 2024

NC-1, 13 JUN 2024 to 11 JUL 2024