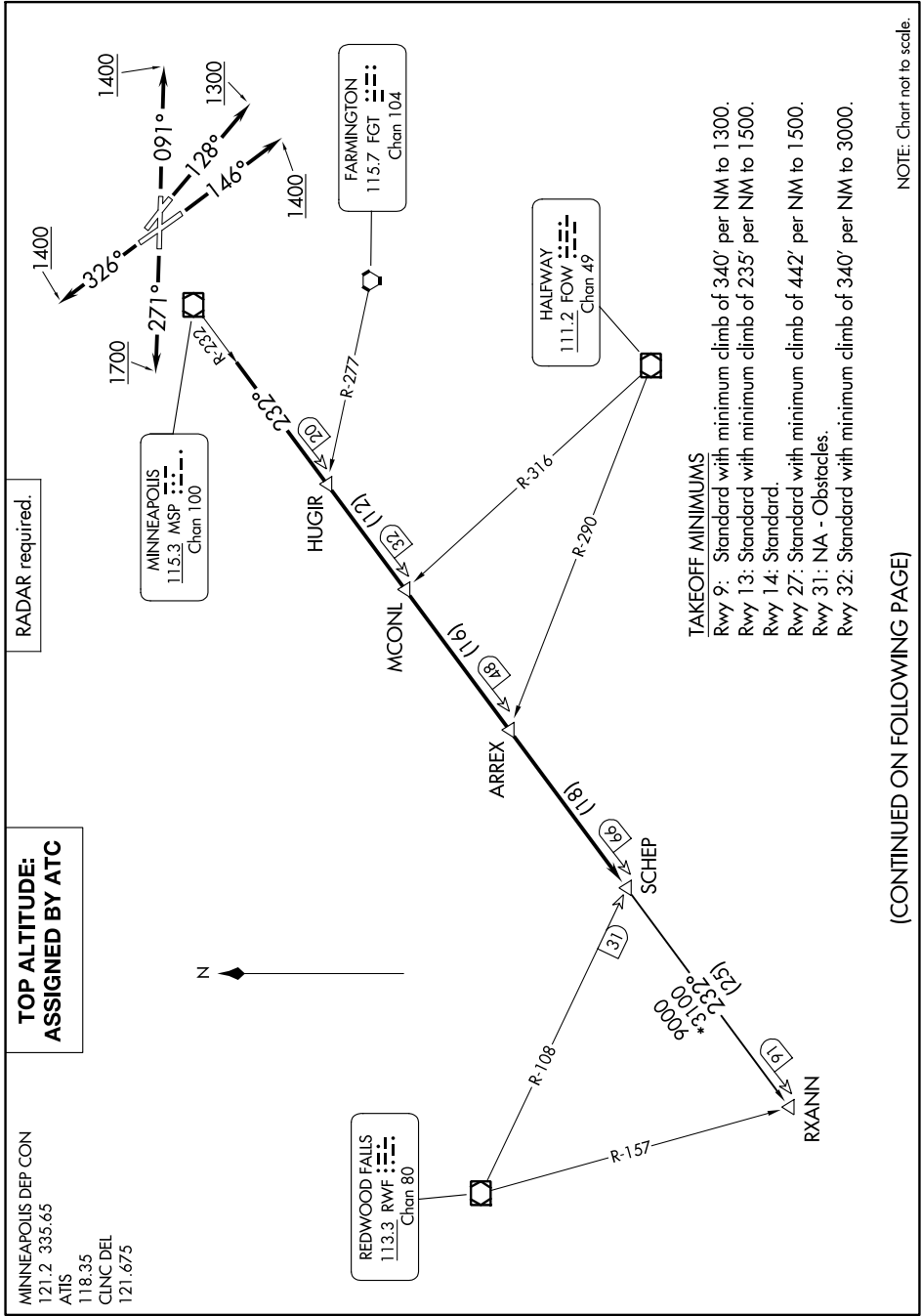


NC-1, 13 JUN 2024 to 11 JUL 2024



MINNEAPOLIS DEP CON
121.2 335.65
ATIS
118.35
CLNCDEL
121.675

**TOP ALTITUDE:
ASSIGNED BY ATC**

RADAR required.

TAKEOFF MINIMUMS
 Rwy 9: Standard with minimum climb of 340' per NM to 1300.
 Rwy 13: Standard with minimum climb of 235' per NM to 1500.
 Rwy 14: Standard.
 Rwy 27: Standard with minimum climb of 442' per NM to 1500.
 Rwy 31: NA - Obstacles.
 Rwy 32: Standard with minimum climb of 340' per NM to 3000.

(CONTINUED ON FOLLOWING PAGE)

NOTE: Chart not to scale.

NC-1, 13 JUN 2024 to 11 JUL 2024