

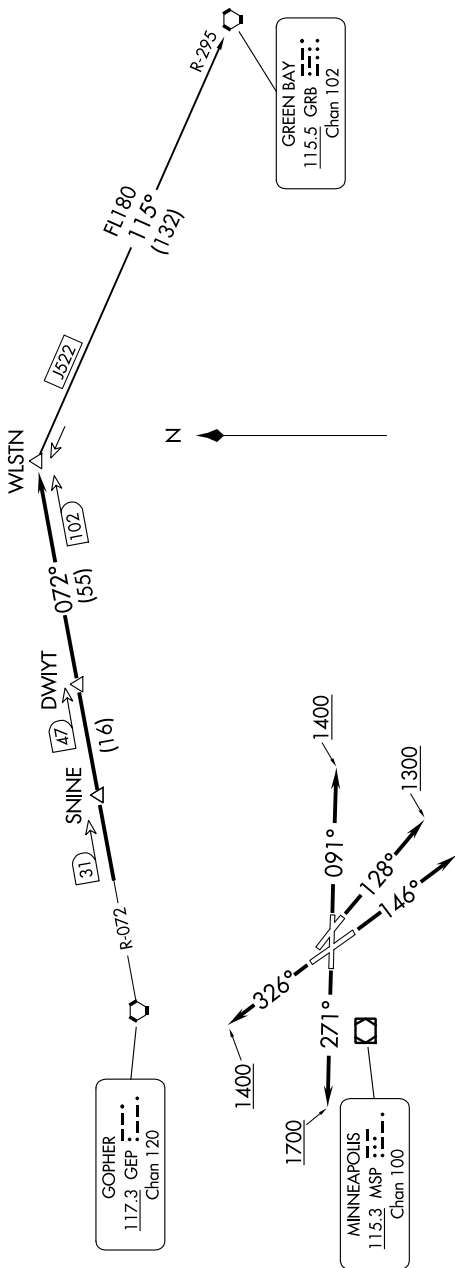
(WLSTN7.WLSTN) 23334
WLSTN SEVEN DEPARTURE

ST PAUL DOWNTOWN HOLMAN FLD (STP)
 AL-263 (FAA) ST. PAUL, MINNESOTA

NC-1, 13 JUN 2024 to 11 JUL 2024

**TOP ALTITUDE:
 (JETS) 7000/
 (PROPS) 5000**

MINNEAPOLIS DEP CON
 121.2 335.65
 ATIS
 118.35
 CLNC DEL
 121.675
 ST. PAUL TOWER *
 119.1 257.8



GOPHER
 117.3 MHz
 Chan 120

MINNEAPOLIS
 115.3 MHz
 Chan 100

GREEN BAY
 115.5 GRB
 Chan 102

TAKEOFF MINIMUMS

- Rwy 9: Standard with minimum climb of 340' per NM to 1300.
- Rwy 13: Standard with minimum climb of 235' per NM to 1500.
- Rwy 14: Standard.
- Rwy 27: 600-2 or standard with minimum climb of 442' per NM to 1500.
- Rwy 31: NA-Obstacles.
- Rwy 32: Standard with minimum climb of 340' per NM to 3000.

NOTE: RADAR required.
 NOTE: Chart not to scale.

(CONTINUED ON FOLLOWING PAGE)

(WLSTN7.WLSTN) 17AUG17
WLSTN SEVEN DEPARTURE

ST. PAUL, MINNESOTA
 ST PAUL DOWNTOWN HOLMAN FLD (STP)

NC-1, 13 JUN 2024 to 11 JUL 2024