

# MZULA FIVE DEPARTURE

AL-266 (FAA)

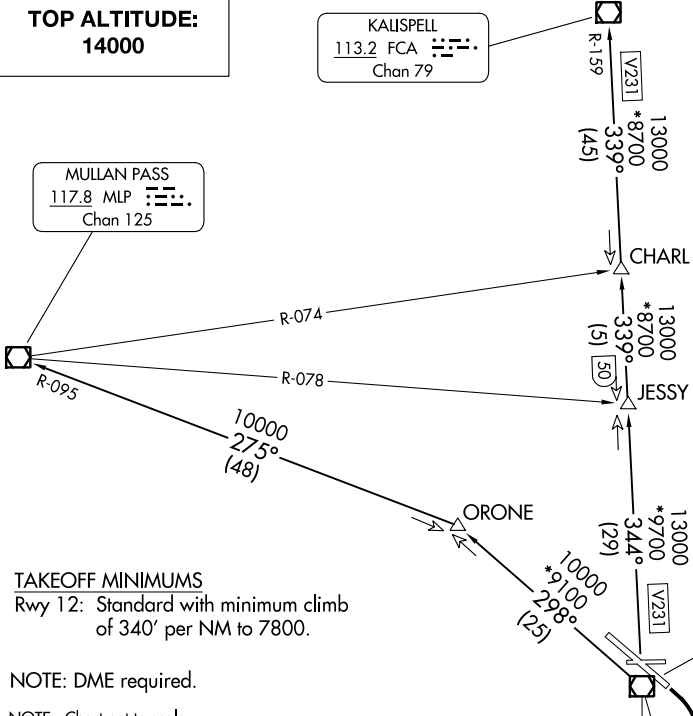
MISSOULA MONTANA (MSO)  
MISSOULA, MONTANA

SPOKANE DEP CON \*  
124.9 298.95  
SALT LAKE CITY CENTER  
127.075 244.875  
ATIS  
126.65  
GND CON  
121.9  
MISSOULA TOWER \*  
118.4 377.175

**TOP ALTITUDE:**  
**14000**

KALISPELL  
113.2 FCA  
Chan 79

MULLAN PASS  
117.8 MLP  
Chan 125



**TAKEOFF MINIMUMS**  
Rwy 12: Standard with minimum climb  
of 340' per NM to 7800.

NOTE: DME required.

NOTE: Chart not to scale.

**DEPARTURE ROUTE DESCRIPTION**

**TAKEOFF RUNWAY 12:** Climbing right turn heading 189° to intercept and proceed on MSO R-159 to cross IPPUG at/above 7800. Thence on transition or assigned route.

**KALISPELL TRANSITION (MZULA5.FCA):** From over IPPUG, left turn on MSO R-159 to MSO VOR/DME, then on MSO R-344 to JESSY, then on MSO R-344 and FCA R-159 to FCA VOR/DME.

**MISSOULA TRANSITION (MZULA5.MSO):** From over IPPUG, left turn on MSO R-159 to MSO VOR/DME.

**MULLAN PASS TRANSITION (MZULA5.MLP):** From over IPPUG left turn on MSO R-159 to MSO VOR/DME, then on MSO R-298 to ORONE, then on MLP R-095 to MLP VOR/DME.

**SALMON TRANSITION (MZULA5.LKT):** From over IPPUG on MSO R-159 to VICTO, then on heading 195° to OCFOW, then on MSO R-167 and LKT R-347 to LKT VOR/DME.

NW-1, 13 JUN 2024 to 11 JUL 2024

NW-1, 13 JUN 2024 to 11 JUL 2024

# MZULA FIVE DEPARTURE