

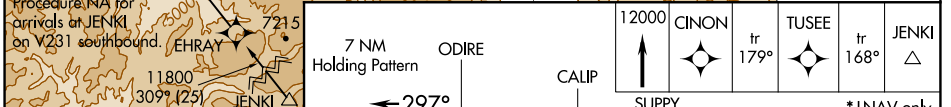
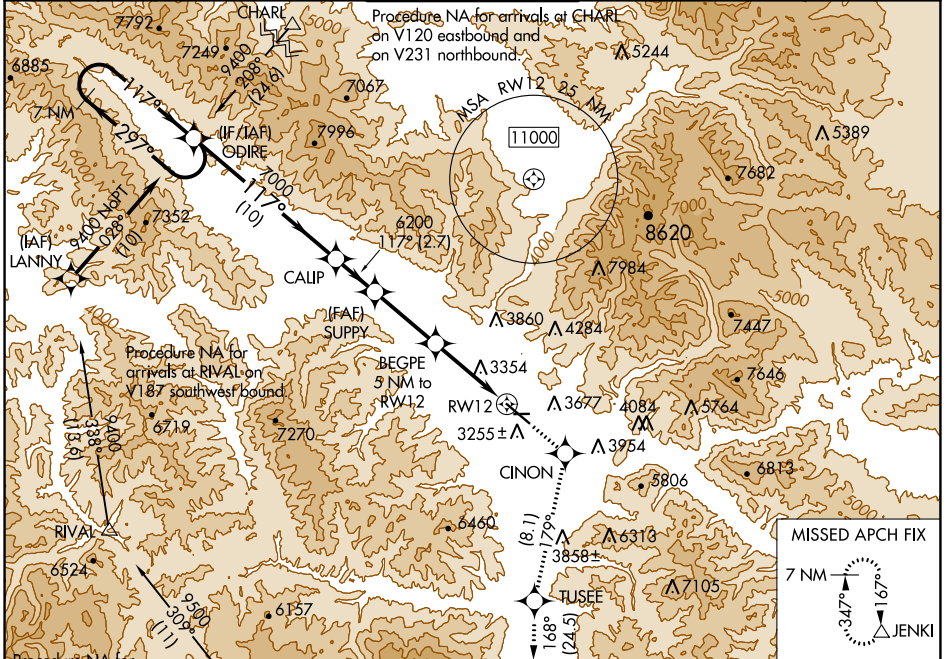
WAAS CH <b>65715</b> <b>W12B</b>	APP CRS <b>117°</b>	Rwy Idg TDZE Apt Elev	<b>9501</b> <b>3200</b> <b>3206</b>
--	------------------------	-----------------------------	---

# RNAV (GPS) Y RWY 12

MISSOULA MONTANA (MISO)

RNP APCH.	MALS R	MISSED APPROACH: (Do not exceed 200K until CINON) Climb to 12000 direct CINON and on track 179° to TUSEE and on track 168° to JENKI and hold, continue climb-in-hold to 12000. ## Missed approach requires minimum climb of 325 feet per NM to 7700.
<p>⚠ Circling N/A for Cats C and D northeast of Rwy 12-30. Inop table does not apply to LNAV # Cats C/D. Inop table does not apply to LPV † all Cats. **RVR 1800 authorized with use of FD or AP or HUD to DA.</p>		

ATIS <b>126.65</b>	SPOKANE APP CON * <b>124.9 298.95</b>	MISSOULA TOWER * <b>118.4 (CTAF) 0 377.175</b>	GND CON <b>121.9</b>	UNICOM <b>122.95</b>
-----------------------	--	---	-------------------------	-------------------------



ELEV 3206	<b>D</b>	TDZE 3200
REIL Rwy 30 MIRL Rwy 8-26 HIRL Rwy 12-30		

	7 NM Holding Pattern	ODIRE	CALIP	SUPPLY	BEGPE 5 NM to RW12	TUSEE tr 179°	JENKI tr 168°	*LNAV only
9400	← 297°	117° →	7000	6200	*4840			
GP 3000° TCH 55								
	10 NM	2.7 NM	4.3 NM	3.8 NM	1.2 NM			
CATEGORY	A	B	C	D				
LPV DA **		3400/24	200 (200-½)					
LPV DA †		4229-4	1029 (1100-4)					
LNAV MDA ##		3640/24	440 (500-½)	3640/40	440 (500-¾)			
LNAV MDA #		4520/40 1320 (1400-¾)	4520/55 1320 (1400-1)	4520-3	1320 (1400-3)			
<b>C</b> CIRCLING		4520-1¼ 1314 (1400-1¼)	4700-1½ 1494 (1500-½)	4700-3	1494 (1500-3)	5140-3	1934 (2000-3)	

NW-1, 13 JUN 2024 to 11 JUL 2024

NW-1, 13 JUN 2024 to 11 JUL 2024