

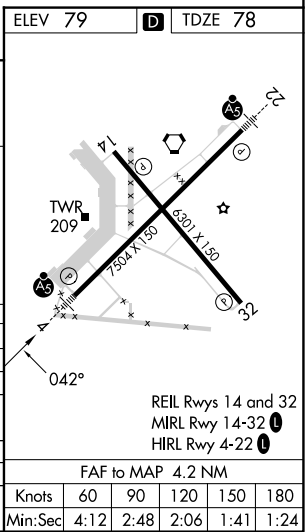
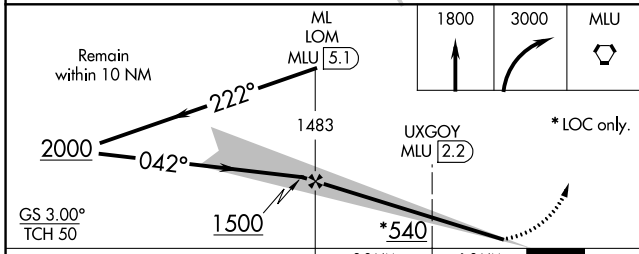
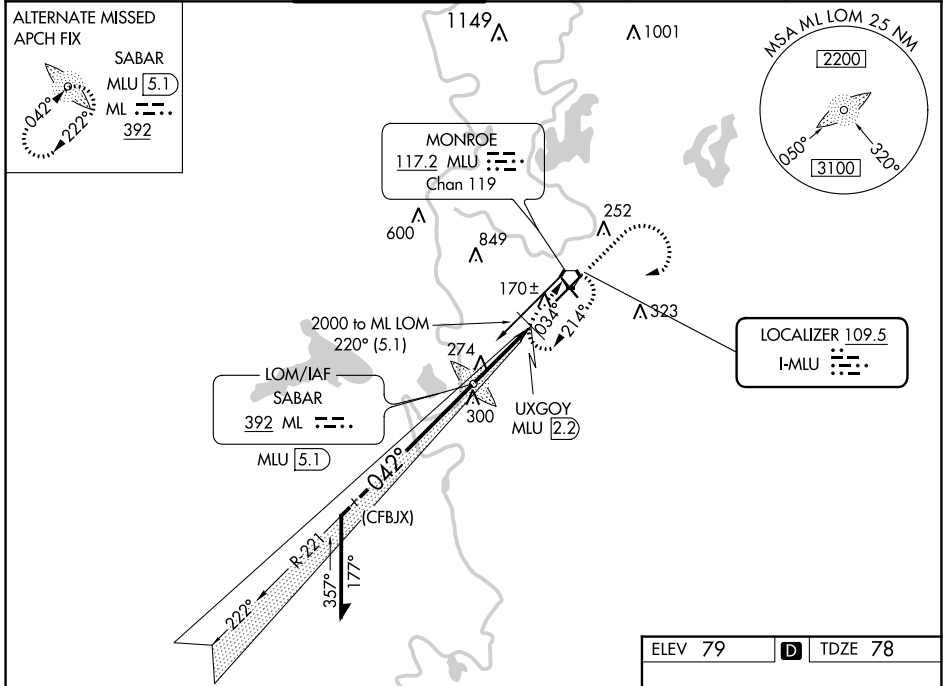
LOC I-MLU <b>109.5</b>	APP CRS <b>042°</b>	Rwy Idg <b>7504</b> TDZE <b>78</b> Apt Elev <b>79</b>
---------------------------	------------------------	---

# ILS or LOC RWY 4

MONROE RGNL (MLU)

ADF or DME required for procedure entry.		MALSR	MISSED APPROACH: Climb to 1800 then climbing right turn to 3000 direct MLU VORTAC and hold.
⚠ Circling Rwy 14 NA at night. For inop ALS, increase S-LOC 4 Cat C/D visibility to 1½ SM. ⚠ UXGOY FIX MINIMUMS: For inop ALS, increase S-LOC 4 Cat C/D visibility to RVR 5500. ASR **RVR 1800 authorized with the use of FD or AP or HUD to DA. # DME from MLU VORTAC.			

ATIS <b>125.05</b>	MONROE APP CON * <b>118.15 290.475</b>	MONROE TOWER * <b>118.9 (CTAF) 0 257.8</b>	GND CON <b>121.9</b>	CLNC DEL <b>121.65</b>	UNICOM <b>122.95</b>
-----------------------	---	---	-------------------------	---------------------------	-------------------------



CATEGORY	A	B	C	D
S-ILS 4		**278/24	200 (200-½)	
S-LOC 4	540/24	462 (500-½)	540/50	462 (500-1)
CIRCLING	580-1	501 (600-1)	740-1¾ 661(700-1¾)	1160-3 1081 (1100-3)
# UXGOY FIX MINIMUMS				
S-LOC 4	420/24	342 (400-½)	420/30	342 (400-¾)
CIRCLING	580-1	501 (600-1)	740-1¾ 661 (700-1¾)	1160-3 1081 (1100-3)

FAF to MAP 4.2 NM					
Knots	60	90	120	150	180
Min:Sec	4:12	2:48	2:06	1:41	1:24

SC-4, 13 JUN 2024 to 11 JUL 2024

SC-4, 13 JUN 2024 to 11 JUL 2024