

WAAS CH 70510 W22A	APP CRS 222°	Rwy Idg TDZE 78 Apt Elev 79
--	------------------------	---

RNAV (GPS) RWY 22

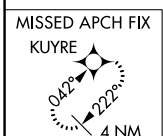
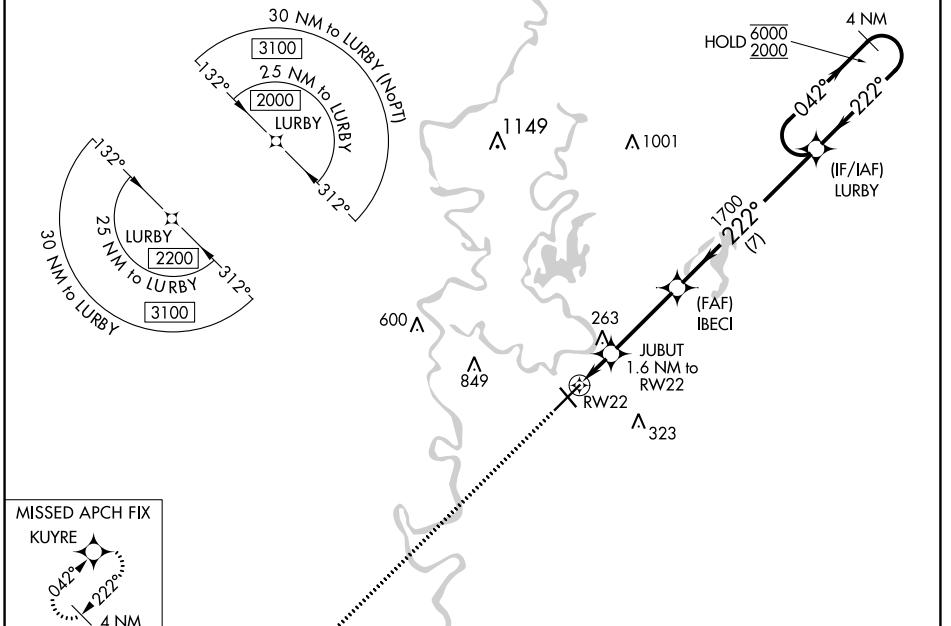
MONROE RGNL (MLU)

RNP APCH.
 Circling Rwy 14 NA at night. For uncompensated Baro-VNAV systems, LNAV/VNAV NA below -6°C or above 54°C. For inop ALS, increase LNAV/VNAV all Cats visibility to 1½ SM.
 ASR

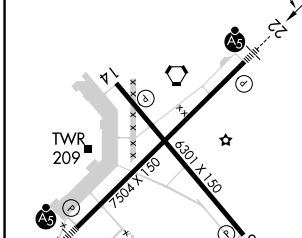
MALSR

 MISSED APPROACH: Climb to 3000 direct KUYRE and hold, continue climb-in-hold to 3000.

ATIS 125.05	MONROE APP CON * 118.15 290.475	MONROE TOWER * 118.9 (CTAF) 257.8	GND CON 121.9	CLNC DEL 121.65	UNICOM 122.95
-----------------------	---	---	-------------------------	---------------------------	-------------------------



ELEV 79	D	TDZE 78
---------	----------	---------



3000	KUYRE	LURBY	4 NM Holding Pattern
*LNAV only.	JUBUT 1.6 NM to RW22	IBECI 1700	GP 3.00° TCH 50
RW22	620*	1700	042° → 6000 ← 222° 2000
	1.6 NM	3.4 NM	7 NM

CATEGORY	A	B	C	D
LPV DA		278-½	200 (200-½)	
LNAV/VNAV DA		534-1	456 (500-1)	
LNAV MDA	520-½	442 (500-½)	520-¾	442 (500-¾)
C CIRCLING	540-1 461 (500-1)	580-1 501 (600-1)	740-1¾ 661 (700-1¾)	1160-3 1081 (1100-3)

REIL Rwy 14 and 32
 MIRL Rwy 14-32
 HIRL Rwy 4-22

SC-4, 13 JUN 2024 to 11 JUL 2024

SC-4, 13 JUN 2024 to 11 JUL 2024