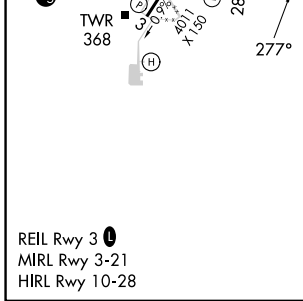
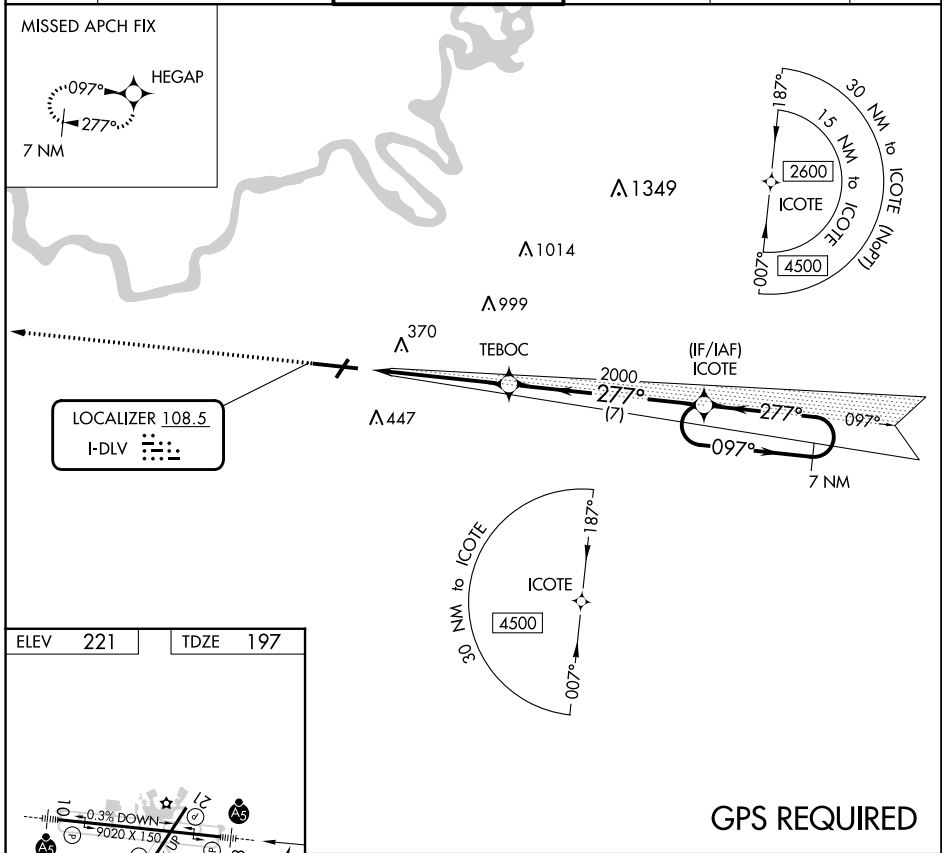


LOC I-DLV	APP CRS	Rwy Idg	<b>9020</b>
<b>108.5</b>	<b>277°</b>	TDZE	<b>197</b>
		Apt Elev	<b>221</b>

# ILS Z RWY 28

MONTGOMERY RGNL (DANNELLY FLD) (MGM)

NA GPS required. For inop MALS, increase S-ILS 28 Cat E visibility to 3/4 mile.	MALS 		MISSED APPROACH: Climb to 3100 direct HEGAP and hold.		
	ATIS <b>120.675</b>	MONTGOMERY APP CON * <b>124.0 363.025</b>	DANNELLY TOWER * <b>119.7 (CTAF) 360.85</b>	GND CON <b>121.7 348.6</b>	CLNC DEL <b>118.3 270.3</b>



ELEV	221	TDZE	197
REIL Rwy 3 MIRL Rwy 3-21 HIRL Rwy 10-28		3100 HEGAP 	VGS1 and ILS glidepath not coincident (VGS1 Angle 3.00/TCH 75).
ICOTE 7 NM Holding Pattern		ICOTE 2600 GS 3.00° TCH 56	
CATEGORY S-ILS 28	A	B	C
397-1/2 200 (200-1/2)			

SE-4, 13 JUN 2024 to 11 JUL 2024

SE-4, 13 JUN 2024 to 11 JUL 2024

# ILS Z RWY 28