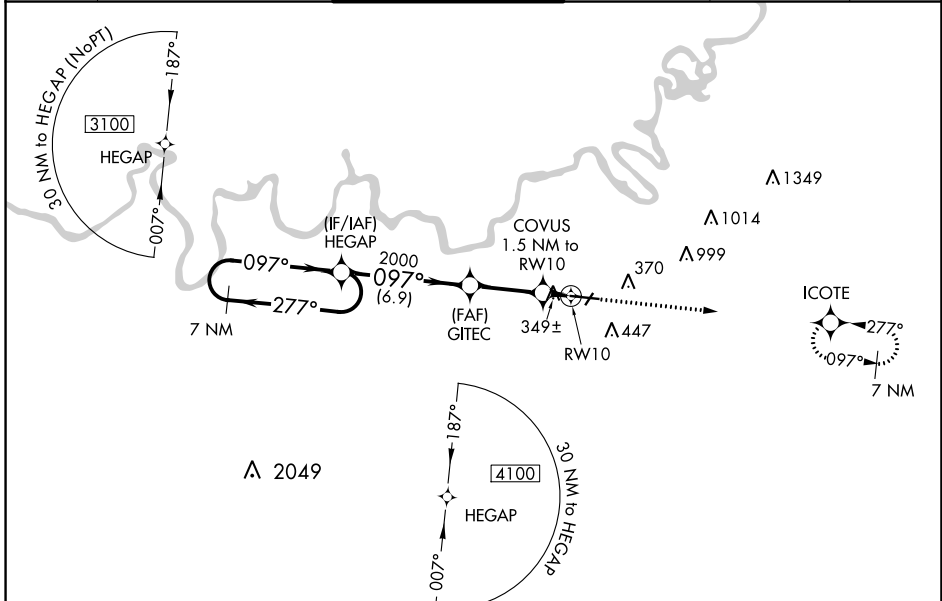


WAAS CH 50100 W 10A	APP CRS 097°	Rwy Idg TDZE Apt Elev	9020 219 221
---	------------------------	-----------------------------	---

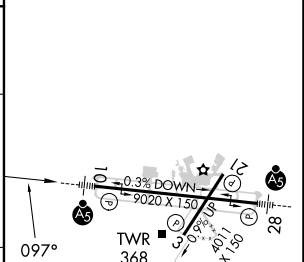
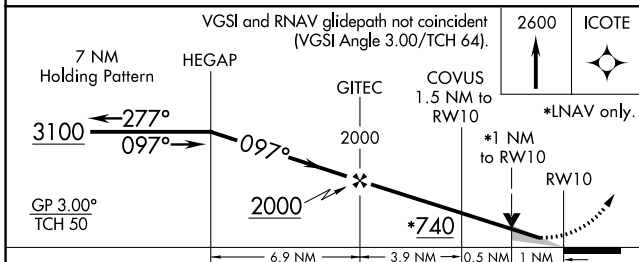
RNAV (GPS) RWY 10

MONTGOMERY RGNL (DANNELLY FLD) (MGM)

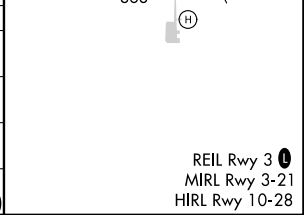
RNP APCH.		DANNELLY TOWER ★		GND CON	CLNC DEL	UNICOM
<p>▼ For uncompensated Baro-VNAV systems, LNAV/VNAV NA below -8°C (18°F) or above 54°C (130°F). For inop MALS, increase LPV Cat E visibility to RVR 4000; increase LNAV/VNAV Cat E visibility to RVR 5000; increase LNAV Cats C/D/E visibility to 1½ mile. Circling for Cat E NA north of Rwy 10-28. **RVR 1800 authorized with use of FD or AP or HUD to DA.</p>		<p>★ 119.7 (CTAF) 360.85</p>		<p>121.7 348.6</p>	<p>118.3 270.3</p>	<p>122.95</p>
ATIS	MONTGOMERY APP CON ★					
120.675	124.0 363.025					



ELEV	221	TDZE	219
------	-----	------	-----



CATEGORY	A	B	C	D	E
LPV DA **	419/24		200 (200-½)		
LNAV/VNAV DA	530/24		311 (400-½)		
LNAV MDA	600/24	381 (400-½)		600/35 381 (400-¾)	
CIRCLING	700-1	479 (500-1)	800-1½ 579 (600-1½)	860-2 639 (700-2)	860-2¼ 639 (700-2¼)



REIL Rwy 3
MIRL Rwy 3-21
HIRL Rwy 10-28

SE-4, 13 JUN 2024 to 11 JUL 2024

SE-4, 13 JUN 2024 to 11 JUL 2024