

WAAS CH 56200 W28A	APP CRS 277°	Rwy Idg TDZE Apt Elev	9020 197 221
--	------------------------	-----------------------------	---

RNAV (GPS) RWY 28

MONTGOMERY RGNL (DANNELLY FLD) (MGM)

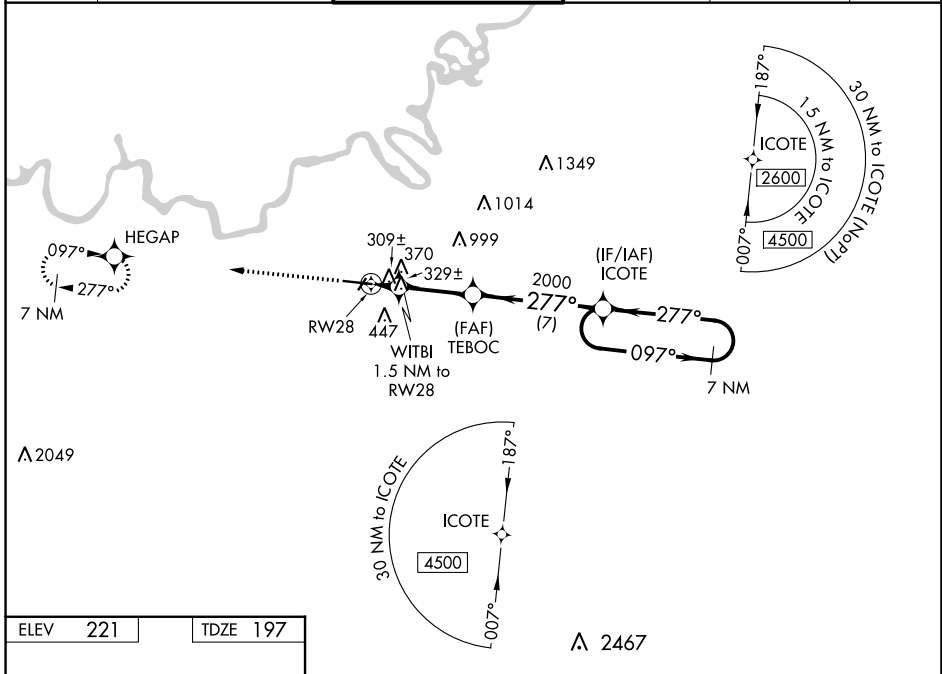
⚠ For uncompensated Baro-VNAV systems, LNAV/VNAV NA below -8°C (18°F) or above 54°C (130°F). DME/DME RNP-0.3 NA. For inop MALS, increase LPV Cat E visibility to 3/4 mile; increase LNAV/VNAV Cat E visibility to 1 3/8 mile; increase LNAV Cat E visibility to 1 1/8 mile. Circling for Cat E NA north of Rwy 10-28.

MALS

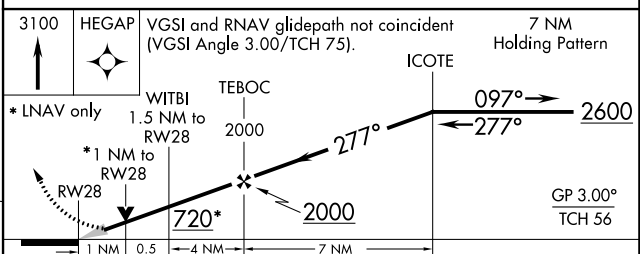
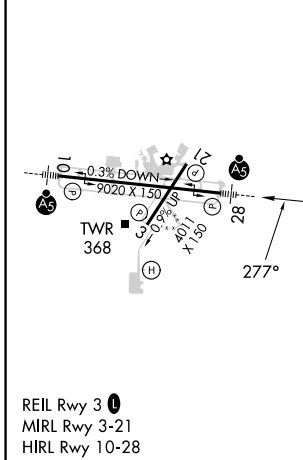


MISSED APPROACH:
Climb to 3100 direct
HEGAP and hold.

ATIS 120.675	MONTGOMERY APP CON * 124.0 363.025	DANNELLY TOWER * 119.7 (CTAF) 360.85	GND CON 121.7 348.6	CLNC DEL 118.3 270.3	UNICOM 122.95
------------------------	--	--	-------------------------------	--------------------------------	-------------------------



ELEV 221	TDZE 197
----------	----------



CATEGORY	A	B	C	D	E
LPV DA	397-1/2		200 (200-1/2)		
LNAV/VNAV DA	606-7/8		409 (400-7/8)		
LNAV MDA	580-1/2 383 (400-1/2)		580-5/8 383 (400-5/8)		
C CIRCLING	700-1 479 (500-1)		800-1 1/2 579 (600-1 1/2)	860-2 639 (700-2)	860-2 1/4 639 (700-2 1/4)

SE-4, 13 JUN 2024 to 11 JUL 2024

SE-4, 13 JUN 2024 to 11 JUL 2024