

HI-ILS or LOC/DME RWY 19

LOC I-MTC 110.1	APCH CRS 187°	Rwy Idg THRE Arprt Elev 9000 579 580
---------------------------	-------------------------	--

AL-276 [USAF]

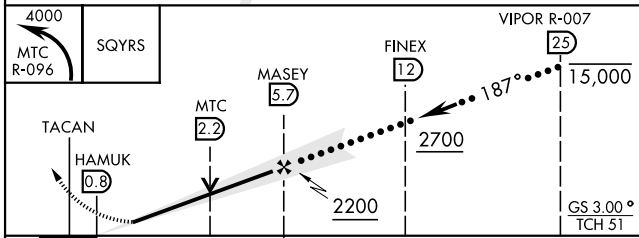
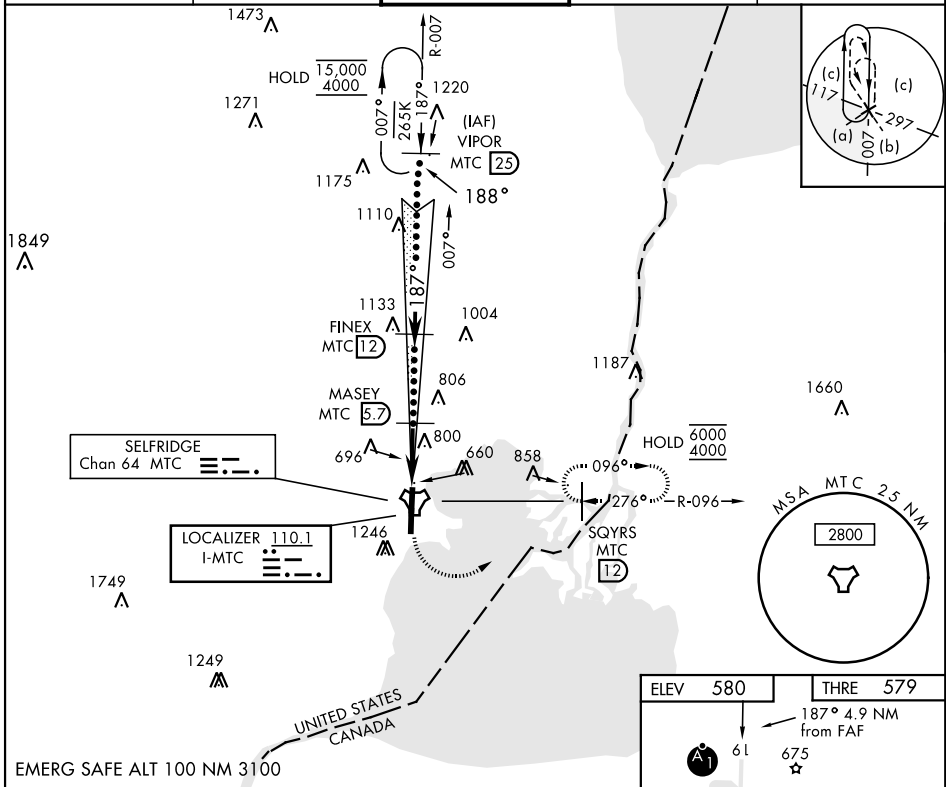
SELFRIDGE ANGB (KMTC)

▼ *When ALS inop, increase RVR to 55, vis to 1 mile.
 **When ALS inop, increase vis to 1 3/8 miles.
 ***Circling not authorized W of Rwy 01-19.

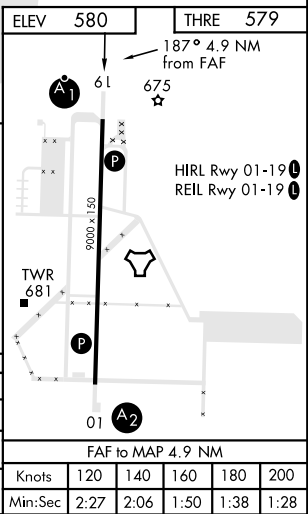


MISSED APPROACH: Climbing left turn to 4000, intercept MTC R-096 to SQYRS and hold, continue climb-in-hold to 4000.

ATIS 125.325 270.1	APP CON 119.6 318.2	TOWER ★ 120.15 (CTAF) 0 225.4	GND CON 128.3 275.8	CLNC DEL 128.3 275.8
------------------------------	-------------------------------	---	-------------------------------	--------------------------------



CATEGORY	C	D	E
S-ILS 19 *	923/40	344 (400-3/4)	
S-LOC 19 **	1080/55	501 (600-1)	
CIRCLING ***	1120-1 1/2 541 (600-1 1/2)	1140-2	561 (600-2)



HI-ILS or LOC/DME RWY 19

EC-1, 13 JUN 2024 to 11 JUL 2024

EC-1, 13 JUN 2024 to 11 JUL 2024