

# HI-TACAN RWY 19

TACAN MTC Chan <b>64</b>	APCH CRS <b>177°</b>	Rwy Ldg THRE <b>579</b> Arprt Elev <b>580</b>
-----------------------------	-------------------------	---

AL-276 [USAF]

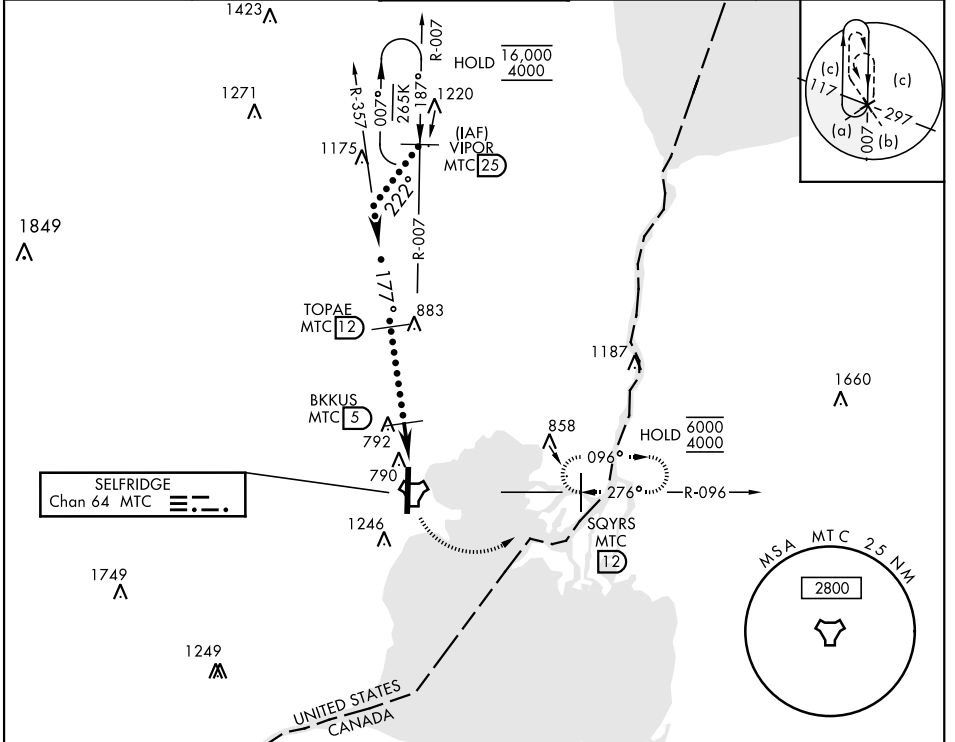
SELFRIDGE ANGB (KMTC)

▼ \* When ALS inop, increase vis to 1½ miles.  
\*\* Circling not authorized W of Rwy 01-19.

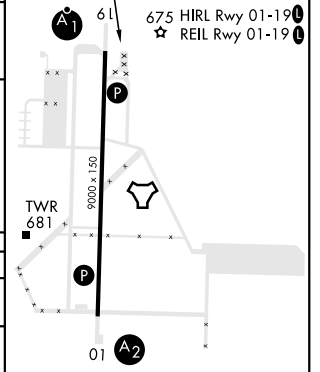
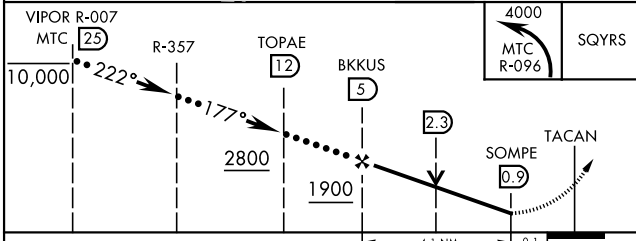
ALSF-1

MISSED APPROACH: Climbing left turn to 4000, intercept MTC R-096 to SQYRS and hold, continue climb-in-hold to 4000.

ATIS <b>125.325 270.1</b>	APP CON <b>119.6 318.2</b>	TOWER ★ <b>120.15 (CTAF) 0 225.4</b>	GND CON <b>128.3 275.8</b>
			CLNC DEL <b>128.3 275.8</b>



EMERG SAFE ALT 100 NM 3100	ELEV 580	THRE 579
----------------------------	----------	----------



CATEGORY	C	D	E
S-19*	1100/55	521 (600-1)	
CIRCLING**	1120-1½ 541 (600-1½)	1140-2	561 (600-2)

# HI-TACAN RWY 19

EC-1, 13 JUN 2024 to 11 JUL 2024

EC-1, 13 JUN 2024 to 11 JUL 2024