

MT. CLEMENS, MICHIGAN

ILS or LOC/DME RWY 1

LOC I-RFB 110.1	APCH CRS 007°	Rwy Ldg THRE 579 Arpt Elev 580
---------------------------	-------------------------	---

AL-276 [USAF]

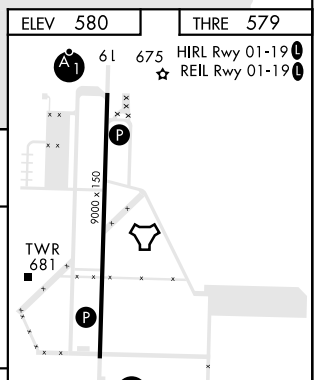
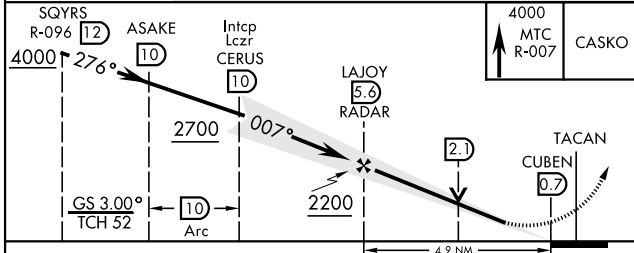
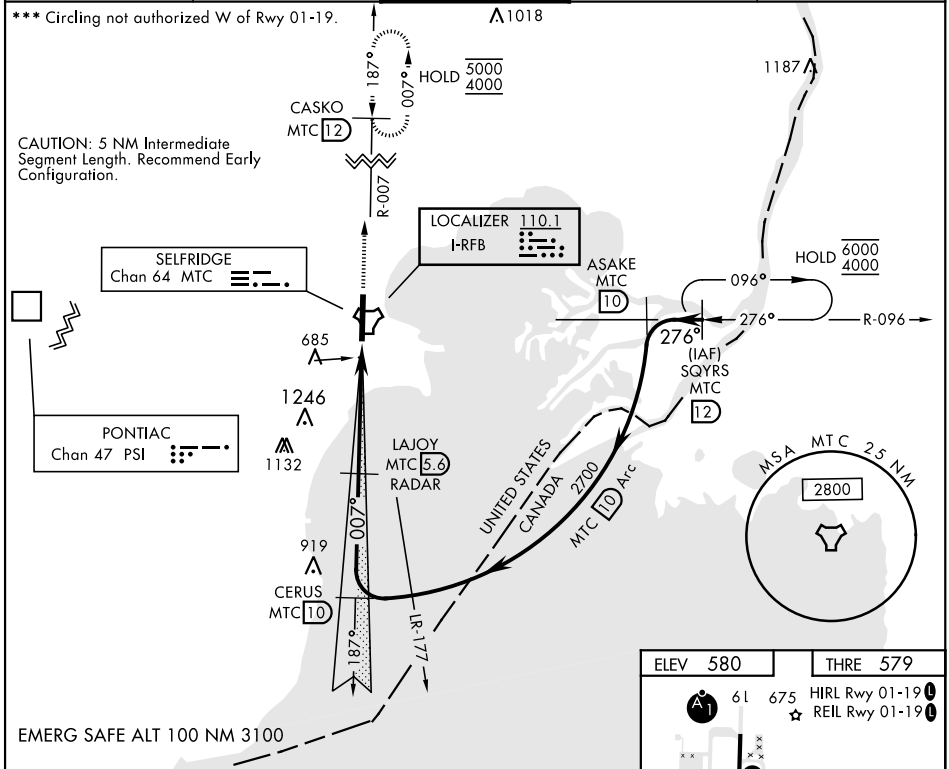
SELFRIDGE ANGB (KMTC)

▼ * When ALS inop, increase RVR to 50, vis to 1 mile.
 ** When ALS inop, increase CAT AB RVR to 55 and vis to 1 mile CAT CDE vis to 1½ miles.



MISSED APPROACH: Climb to 4000 on MTC R-007 to CASKO and hold, continue climb-in-hold to 4000.

ATIS 125.325 270.1	SELFRIDGE APP CON 119.6 318.2	SELFRIDGE TOWER ★ 120.15 (CTAF) 0 225.4	GND CON 128.3 275.8	CLNC DEL 128.3 275.8
------------------------------	---	---	-------------------------------	--------------------------------



CATEGORY	A	B	C	D	E
S-ILS 01*	907/40		328	(400-¾)	
S-LOC 01**	1060/40	481 (500-¾)	1060/60	481 (500-1½)	
CIRCLING ***	1120-1	541 (600-1)	1120-1½ 541 (600-1½)	1140-2	561 (600-2)

FAF to MAP 4.9 NM					
Knots	60	90	120	150	180
Min:Sec	4:54	3:16	2:27	1:58	1:38

MT. CLEMENS, MICHIGAN
 Amdt 3 23AUG12

42° 37' N-82° 50' W

SELFRIDGE ANGB (KMTC)

ILS or LOC/DME RWY 1

EC-1, 13 JUN 2024 to 11 JUL 2024

EC-1, 13 JUN 2024 to 11 JUL 2024