

(KAYLN3.KAYLN) 24137

KAYLN THREE DEPARTURE (RNAV)

AL-276 (FAA)

SELFRIDGE ANGB (MTC)

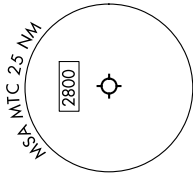
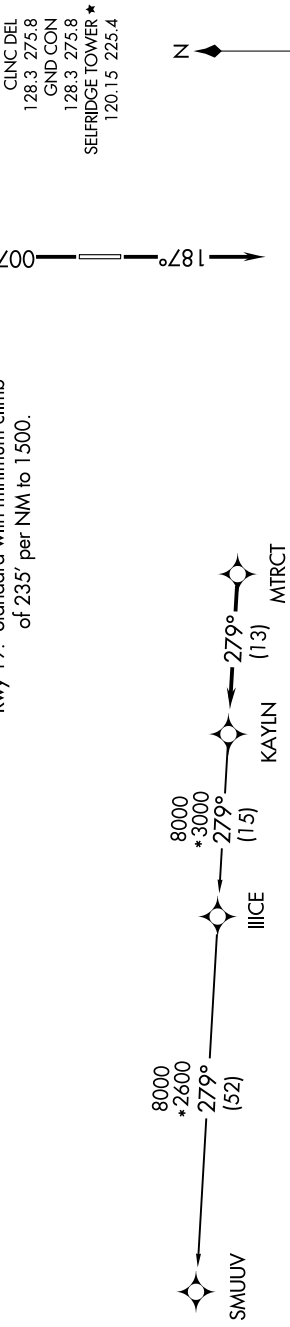
MOUNT CLEMENS, MICHIGAN

EC-1, 13 JUN 2024 to 11 JUL 2024

**TOP ALTITUDE:
ASSIGNED AT ATC**

RNAV-1 DME/DME/IRU or GPS.
RADAR required.

TAKEOFF MINIMUMS:
Rwy 1: Standard.
Rwy 19: Standard with minimum climb of 235' per NM to 1500.



NOTE: Turbojet departures at/above 10000, maintain 280K until advised by ATC.

NOTE: Chart not to scale.

DEPARTURE ROUTE DESCRIPTION

TAKEOFF RUNWAY 1: Climb on heading 007° or as assigned by ATC, thence....
TAKEOFF RUNWAY 19: Climb on heading 187° or as assigned by ATC, thence....
for RADAR vectors to MTRCT, then on track 279° to KAYLN, then on (transition). Maintain ATC assigned altitude, expect filed altitude 10 minutes after departure.

SMUUV TRANSITION [KAYLN3.SMUUV]:

KAYLN THREE DEPARTURE (RNAV)

(KAYLN3.KAYLN) 16MAY24

MOUNT CLEMENS, MICHIGAN

SELFRIDGE ANGB (MTC)

EC-1, 13 JUN 2024 to 11 JUL 2024