

MT. CLEMENS, MICHIGAN

RNAV (GPS) RWY 19

APCH CRS 187°	Rwy ldg 9000
THRE 579	Arpt Elev 580

AL-276 [USAF]

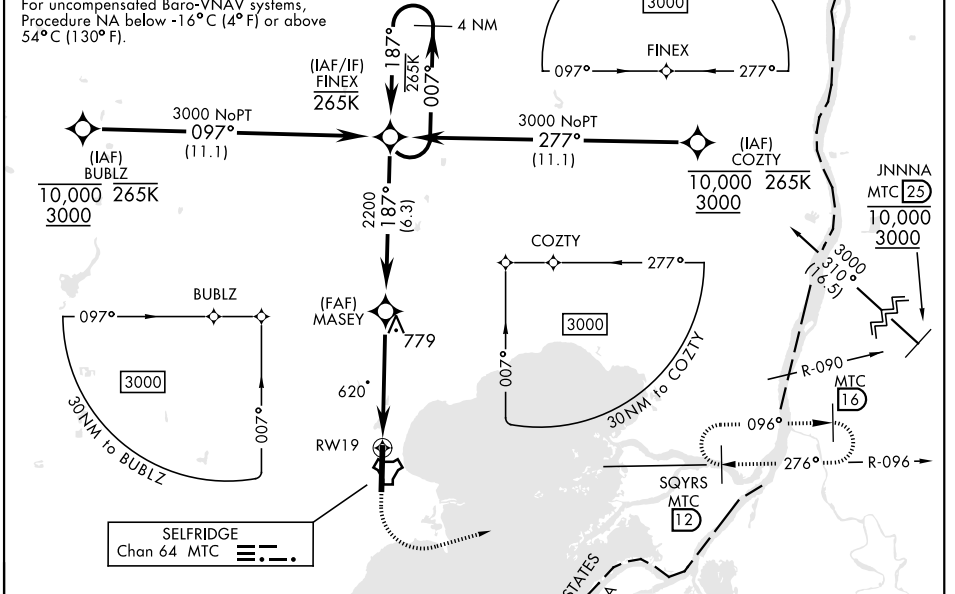
SELFRIDGE ANGB (KMTC)

DME/DME RNP-0.3 NA.
▲ * When ALS inop, increase vis to 1 1/4 miles.

ALSF-1 MISSED APPROACH: Climb to 1200 then climbing left turn to 4000 direct SQYRS (MTC TACAN R-096/T2DME), do not exceed 250 KIAS until turn completion and hold, continue climb-in-hold to 4000.

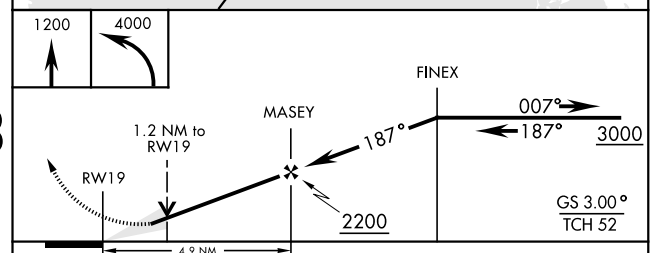
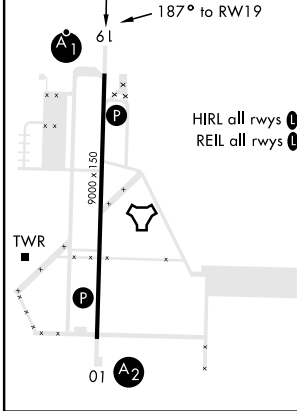
ATIS 125.325 270.1	APP CON 119.6 318.2	TOWER ★ 120.15 (CTAF) 0 225.4	GND CON 128.3 275.8	CLNC DEL 128.3 275.8
------------------------------	-------------------------------	---	-------------------------------	--------------------------------

**** When ALS inop, increase CAT AB RVR to 55, vis to 1 mile, CAT CDE vis to 1 1/4 miles.**
***** Circling not authorized W of Rwy 01-19.**



EMERG SAFE ALT 100 NM 3100

ELEV 580	THRE 579
-----------------	-----------------



CATEGORY	A	B	C	D	E
LNAV/VNAV DA*	1000/40		421	(500-3/4)	
LNAV MDA**	1000/24 421 (500-1/2)		1000/40 421 (500-3/4)		
C CIRCLING ***	1040-1 460 (500-1)	1040-1 1/2 460 (500-1/2)		1140-2 560 (600-2)	

MT. CLEMENS, MICHIGAN
 Orig 12AUG21

42°37'N-82°50'W

SELFRIDGE ANGB (KMTC)

RNAV (GPS) RWY 19

EC-1, 13 JUN 2024 to 11 JUL 2024

EC-1, 13 JUN 2024 to 11 JUL 2024