

MT. CLEMENS, MICHIGAN

TACAN RWY 19

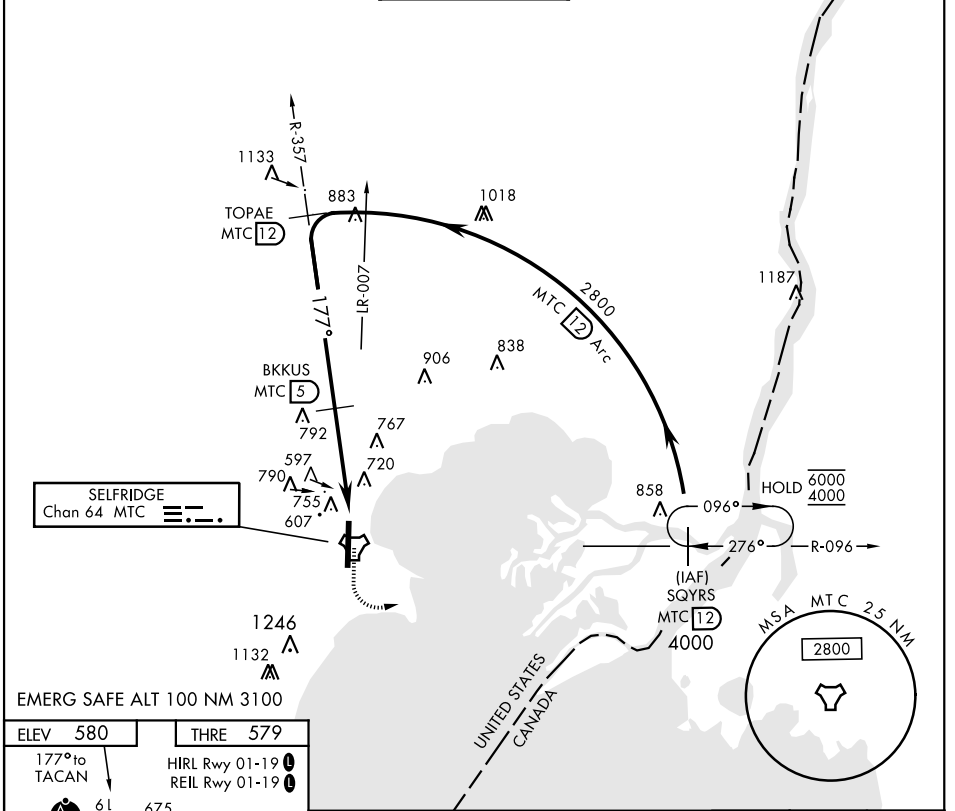
TACAN MTC Chan 64	APCH CRS 177°	Rwy Idg THRE 579 Arprt Elev 580	AL-276 [USAF]	SELFRIDGE ANGB (KMTC)
-----------------------------	-------------------------	---	---------------	-----------------------

▼ * When ALS inop, increase CAT AB RVR to 55, vis to 1 mile, CAT CDE vis to 1½ miles.
 ** Circling not authorized W of Rwy 01-19.

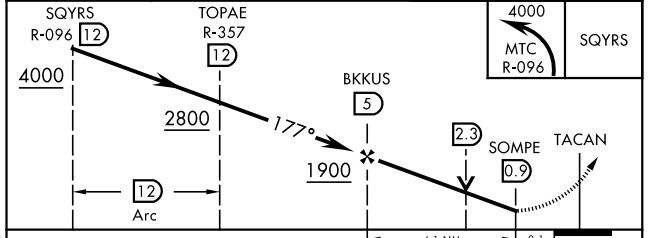
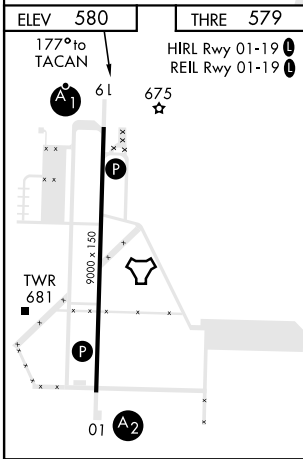
ALSF-1

MISSED APPROACH: Climbing left turn to 4000, intercept MTC R-096 to SQYRS and hold, continue climb-in-hold to 4000.

ATIS 125.325 270.1	SELFRIDGE APP CON 119.6 318.2	SELFRIDGE TOWER * 120.15 (CTAF) 0 225.4	GND CON 128.3 275.8	CLNC DEL 128.3 275.8
------------------------------	---	---	-------------------------------	--------------------------------



EMERG SAFE ALT 100 NM 3100



CATEGORY	A	B	C	D	E
S-19 *	1100/40	521 (600-¾)	1100/55	521 (600-1)	
CIRCLING **	1120-1	541 (600-1)	1120-1½ 541 (600-1½)	1140-2	561 (600-2)

MT. CLEMENS, MICHIGAN 42°37'N-82°50'W SELFRIDGE ANGB (KMTC)

Amdt 3 23AUG12

TACAN RWY 19

EC-1, 13 JUN 2024 to 11 JUL 2024

EC-1, 13 JUN 2024 to 11 JUL 2024