

(TRMML4.TRMML) 24137

TRMML FOUR DEPARTURE (RNAV)

AL-276 (FAA)

SELFRIDGE ANGB (MTC)

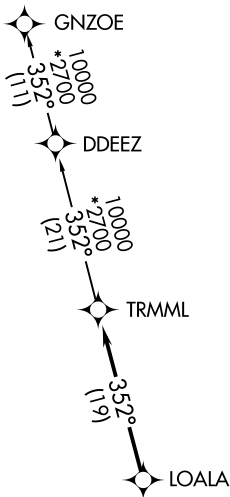
MOUNT CLEMENS, MICHIGAN

**TOP ALTITUDE:
ASSIGNED BY ATC**

RNAV 1 - DME/DME/IRU or GPS.

RADAR required.

SELFRIDGE DEP CON *
 119.6 391.9
 ATIS
 125.325 270.1
 CLNC DEL
 128.3 275.8
 GND CON
 128.3 275.8
 SELFRIDGE TOWER *
 120.15 225.4

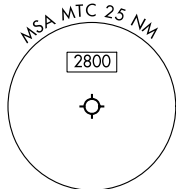


TAKEOFF MINIMUMS:

Rwy 1: Standard.

Rwy 19: Standard with minimum climb of 235' per NM to 1500.

NOTE: Turbojet departures at/above 10000, maintain 280K until advised by ATC.



NOTE: Chart not to scale.

DEPARTURE ROUTE DESCRIPTION

TAKEOFF RUNWAY 1: Climb on heading 007° or as assigned by ATC, thence....

TAKEOFF RUNWAY 19: Climb on heading 187° or as assigned by ATC, thence....

....for RADAR vectors to LOALA, then on track 352° to TRMML, then on (transition). Maintain ATC assigned altitude, expect filed altitude 10 minutes after departure.

GNZOE TRANSITION (TRMML4.GNZOE):

EC-1, 13 JUN 2024 to 11 JUL 2024

EC-1, 13 JUN 2024 to 11 JUL 2024

TRMML FOUR DEPARTURE (RNAV)

(TRMML4.TRMML) 16MAY24

MOUNT CLEMENS, MICHIGAN

SELFRIDGE ANGB (MTC)