


LOC/DME I-APC 111.3 Chan 50	APP CRS 006°	Rwy Idg TDZE Apt Elev	5930 17 36
--	------------------------	-----------------------------	---------------------------------------

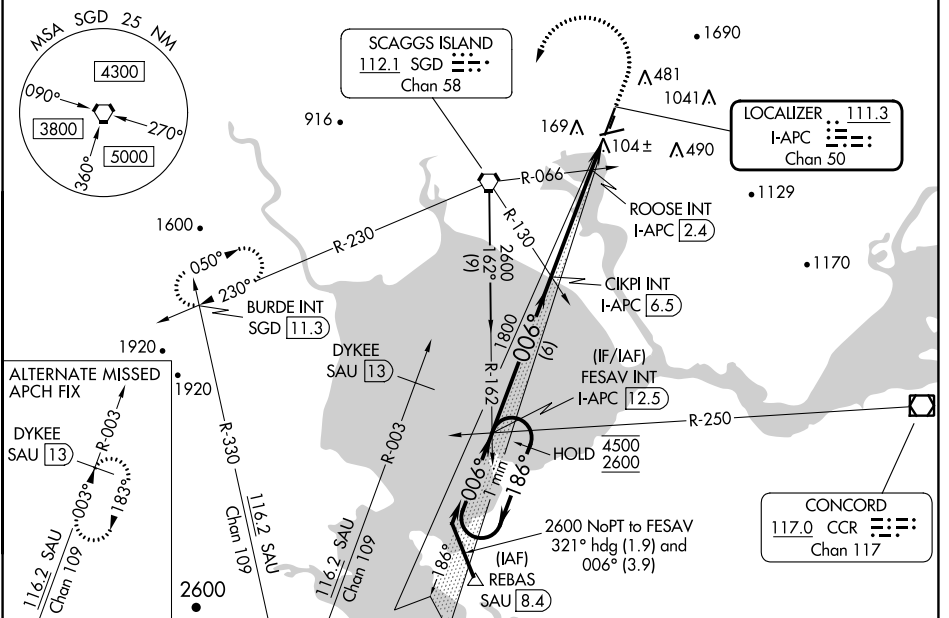
ILS or LOC Z RWY 1L

NAPA COUNTY (APC)

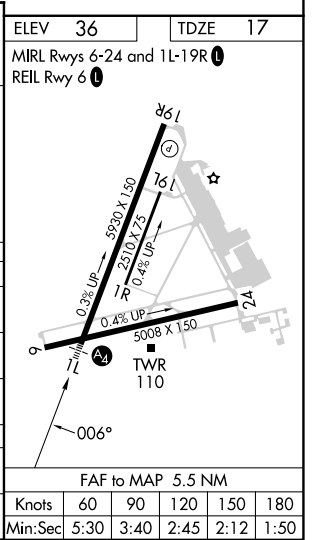
⚠ Autopilot coupled approach NA below 530. Inop table does not apply to S-ILS 1L. Circling Cats A/B/C NA northeast of Rwy 19R and 24. Circling Cat D NA east of Rwy 19L-1R. Circling Rwy 6 NA at night.

MALS  MISSED APPROACH: Climb to 500 then climbing left turn to 3200 direct SGD VORTAC and on SGD VORTAC R-230 to BURDE INT/SGD 11.3 DME and hold, continue climb-in-hold to 3200.

ATIS 124.05	OAKLAND CENTER 127.8 353.5	NAPA TOWER ★ 118.7 (CTAF) 257.8	GND CON 121.7	CLNC DEL 127.85	UNICOM 122.95
-----------------------	--------------------------------------	---	-------------------------	---------------------------	-------------------------



One Minute Holding Pattern	FESAV INT I-APC [12.5]	500	3200	SGD	SGD R-230	BURDE INT
4500 ← 186°	← 186°	006°	1800	*500	I-APC [1.1]	*LOC only
2600	6 NM	4.1 NM	1.4 NM			
GS 3.00° TCH 50						
CATEGORY	A	B	C	D		
S-ILS 1L		217-¾	200 (200-¾)			
S-LOC 1L	500-¾	483 (500-¾)	500-1½	483 (500-1½)		
C CIRCLING	600-1 564 (600-1)	680-1 644 (700-1)	1280-3 1244 (1300-3)	1300-3 1264 (1300-3)		
ROOSE FIX MINIMUMS (DUAL VOR RECEIVERS OR DME REQUIRED)						
S-LOC 1L		360-¾	343 (400-¾)			
C CIRCLING	600-1 564 (600-1)	680-1 644 (700-1)	1280-3 1244 (1300-3)	1300-3 1264 (1300-3)		



SW-2, 13 JUN 2024 to 11 JUL 2024

SW-2, 13 JUN 2024 to 11 JUL 2024