

TAKEOFF MINIMUMS

Rwys 19L/R: Standard.

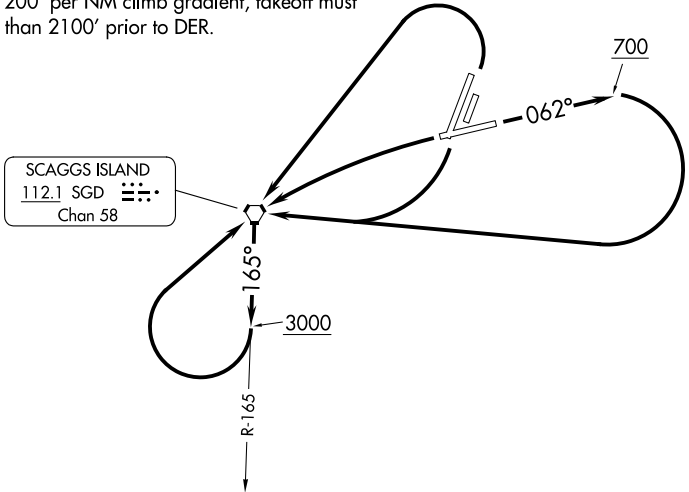
Rwy 1L: Standard with minimum climb of 310' per NM to 900 or 2400-3 for VCOA.

Rwy 1R: Standard with minimum climb of 360' per NM to 700 or 2400-3 for VCOA.

Rwy 6: Standard with minimum climb of 440' per NM to 1700 or 2400-3 for VCOA.

Rwy 24: 300-1½ or standard with minimum climb of 255' per NM to 300, or alternatively, with standard takeoff minimums and a normal 200' per NM climb gradient, takeoff must occur no later than 2100' prior to DER.

OAKLAND CENTER
127.8 353.5
ATIS
124.05
GND CON
121.7
CLNC DEL
127.85
NAPA TOWER*
118.7 (CTAF) 257.8



(CONTINUED ON FOLLOWING PAGE)

NOTE: Chart not to scale.

DEPARTURE ROUTE DESCRIPTION

TAKEOFF RUNWAY 6: Climb on heading 062° to 700, then turn right direct SGD VORTAC, thence. . . .

TAKEOFF RUNWAYS 1L/R, 24: Turn left direct SGD VORTAC, thence. . . .

TAKEOFF RUNWAYS 19L/R: Turn right direct SGD VORTAC, thence. . . .

VCOA RUNWAYS 1L/R, 6: Obtain ATC approval for VCOA when requesting IFR clearance. Climb in visual conditions to cross Napa County Airport at or above 2300, then direct SGD VORTAC, thence. . . .

. . . .aircraft departing SGD VORTAC on R-165 climb on course. All other aircraft continue climb on SGD VORTAC R-165 to 3000, then turn right direct SGD VORTAC before proceeding on course.

SW-2, 13 JUN 2024 to 11 JUL 2024

SW-2, 13 JUN 2024 to 11 JUL 2024