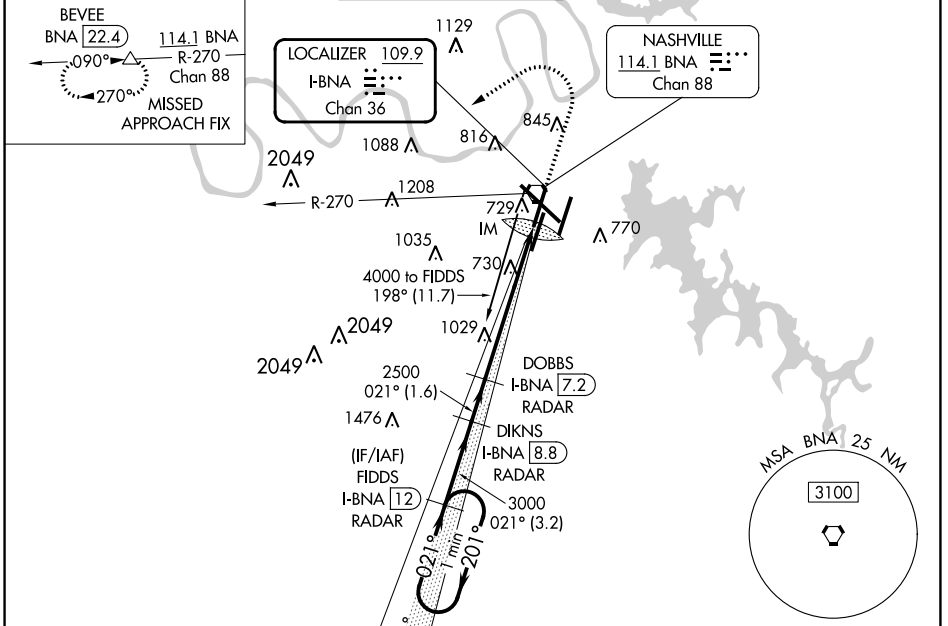


LOC/DME I-BNA 109.9 Chan 36	APP CRS 021°	Rwy ldg 7702 TDZE 599 Apt Elev 599
--	------------------------	---

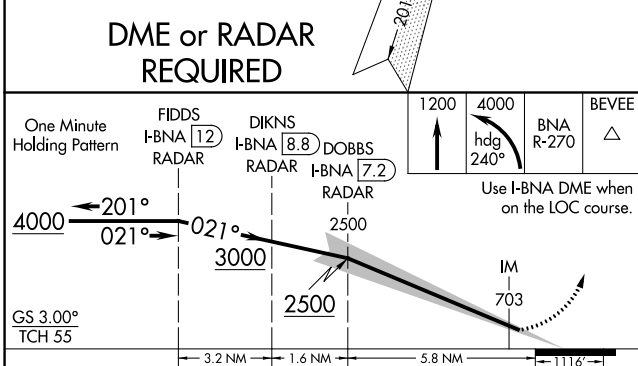
ILS RWY 2L (CAT II & III)

NASHVILLE INTL (BNA)

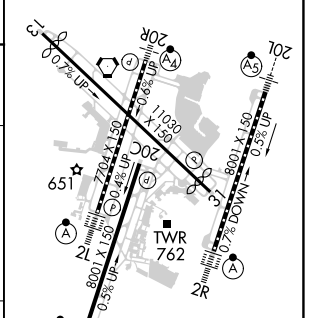
<p>▼ Simultaneous approach authorized with Rwy 2R. DME or radar required. Cat II: RVR 1000 authorized with specific OPSPEC, MSPEC, or LOA approval and use of Autoland or HUD to touchdown.</p>	ALSIF-2	MISSED APPROACH: Climb to 1200 then climbing left turn to 4000 on heading 240° and on BNA VORTAC R-270 to BEVEE/BNA 22.4 DME and hold.			
	D-ATIS 135.1	NASHVILLE APP CON 118.4 360.7	NASHVILLE TOWER 118.6 257.8	GND CON 121.9 348.6	CLNC DEL 126.05



DME or RADAR REQUIRED



ELEV 599	D TDZE 599
----------	-------------------



CATEGORY	A	B	C	D
S-ILS 2L	CAT II RA 104/12 100 DA 699			
S-ILS 2L	CAT III RVR 600			

CATEGORY II & III ILS - SPECIAL AIRCREW & AIRCRAFT CERTIFICATION REQUIRED

HIRL all Rwws
TDZ/CL Rwws 2L and 2R
REIL Rwws 13, 20C, and 31

SE-1, 13 JUN 2024 to 11 JUL 2024

SE-1, 13 JUN 2024 to 11 JUL 2024