

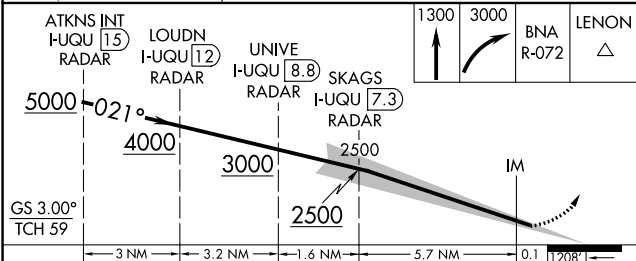
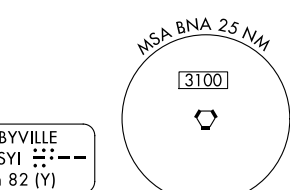
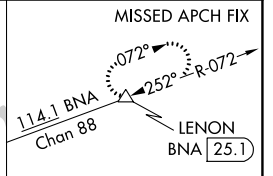
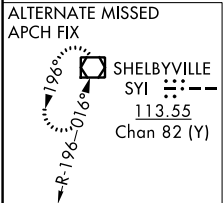
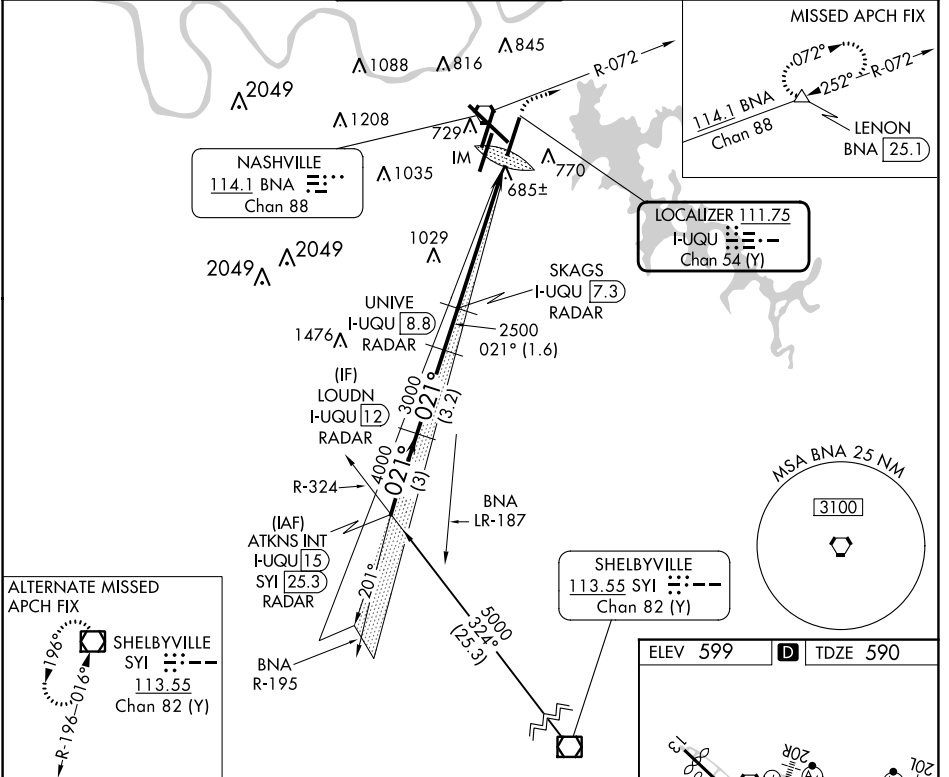
LOC/DME I-UQU <b>111.75</b> Chan <b>54 (Y)</b>	APP CRS <b>021°</b>	Rwy Idg TDZE Apt Elev <b>8000</b> <b>590</b> <b>599</b>
--	------------------------	--

# ILS RWY 2R (SA CAT I)

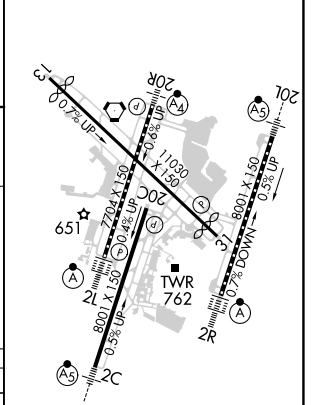
## NASHVILLE INTL (BNA)

DME required.	ALSF-2	MISSED APPROACH: Climb to 1300 then climbing right turn to 3000 on BNA R-072 to LENON/BNA 25.1 DME and hold.
<p>Simultaneous approach authorized with Rwy 2L/C. Requires specific OPSPEC, MSPEC, or LOA approval and use of HUD to DA.</p>		

D-ATIS <b>135.1</b>	NASHVILLE APP CON <b>118.4 360.7</b>	NASHVILLE TOWER <b>118.6 257.8</b>	GND CON <b>121.9 348.6</b>	CLNC DEL <b>126.05</b>	CPDLC
------------------------	---	---------------------------------------	-------------------------------	---------------------------	-------



ELEV 599	TDZE 590
----------	----------



CATEGORY	A	B	C	D
S-ILS 2R	RA 121/14 150 DA 740			
<b>SA CATEGORY I ILS - SPECIAL AIRCREW &amp; AIRCRAFT CERTIFICATION REQUIRED</b>				

HIRL all Rwys  
TDZ/CL Rwys 2L and 2R  
REIL Rwys 13, 20C, and 31

SE-1, 13 JUN 2024 to 11 JUL 2024

SE-1, 13 JUN 2024 to 11 JUL 2024