

APP CRS	Rwy Idg	<b>8000</b>
<b>021°</b>	TDZE	<b>590</b>
	Apt Elev	<b>599</b>

# RNAV (RNP) Z RWY 2R

NASHVILLE INTL (BNA)

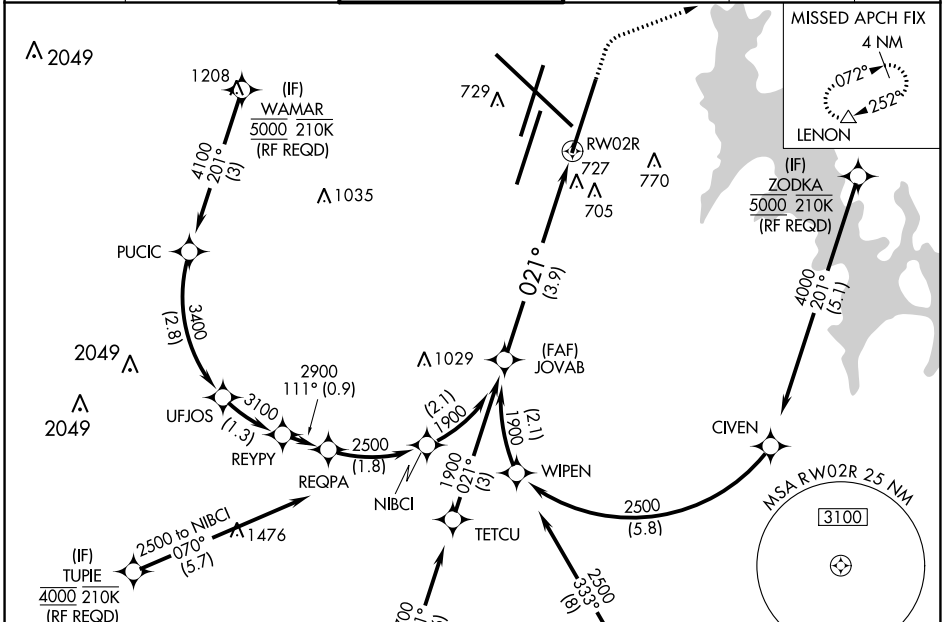
**RNP AR APCH.**

For uncompensated Baro-VNAV systems, procedure NA below -11°C or above 54°C.  
 For inoperative ALSF-2, increase RNP 0.15 all Cats visibility to RVR 5600, RNP 0.30 all Cats visibility to 1 3/8 mile. Simultaneous approach authorized with Rwy 2L/C. Use of FD or AP providing RNAV track guidance required during simultaneous operations.

**ALSF-2**

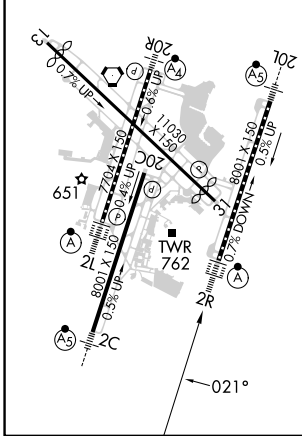
**MISSED APPROACH:**  
 Climb to 1300 then climbing right turn to 4000 direct LENON and hold.

D-ATIS	NASHVILLE APP CON	NASHVILLE TOWER	GND CON	CLNC DEL	CPDLC
<b>135.1</b>	<b>118.4 360.7</b>	<b>118.6 257.8</b>	<b>121.9 348.6</b>	<b>126.05</b>	



ELEV 599	<b>D</b>	TDZE 590
----------	----------	----------

HIRL all Rwys  
 TDZ/CL Rwys 2L and 2R  
 REIL Rwys 13, 20C, and 31



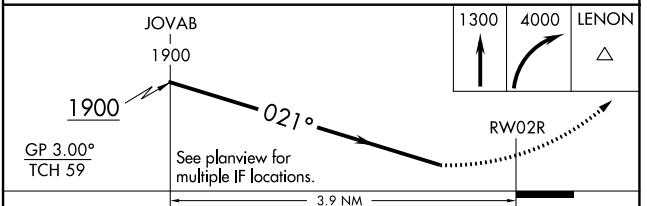
Radar required for procedure entry at ATKNS.

(IF) TUPIE 4000 210K (RF REQD)

(IF) ATKNS 3000

(IF) PUCOR 4000 210K

(IAF) TEARS 6000 250K (RF REQD)



CATEGORY	A	B	C	D
RNP 0.15 DA		938/40	348 (400-3/4)	
RNP 0.30 DA		1024/48	434 (500-1)	

**AUTHORIZATION REQUIRED**

SE-1, 13 JUN 2024 to 11 JUL 2024

SE-1, 13 JUN 2024 to 11 JUL 2024