

APP CRS	Rwy Idg	8995
227°	TDZE	26
	Apt Elev	27

RNAV (RNP) Y RWY 23

NORFOLK INTL (ORF)

▼ For uncompensated Baro-VNAV systems, procedure NA below -9°C (16°F) or above 54°C (130°F). GPS required. For inop ALS, increase RNP 0.10 DA visibility all Cats to 1½ SM, increase RNP 0.30 DA visibility all Cats to 1¾ SM.

MALS
 MISSED APPROACH: Climb to 2000 on track 227° to CALEY and hold.

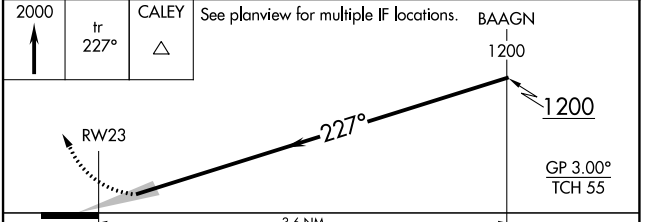
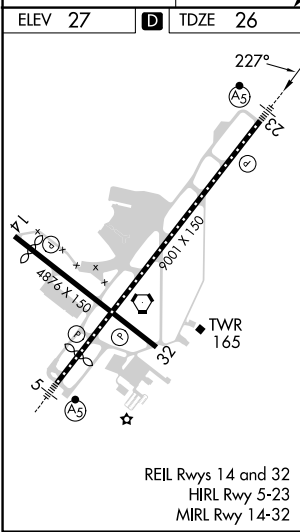
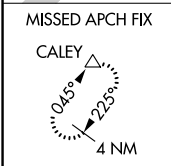
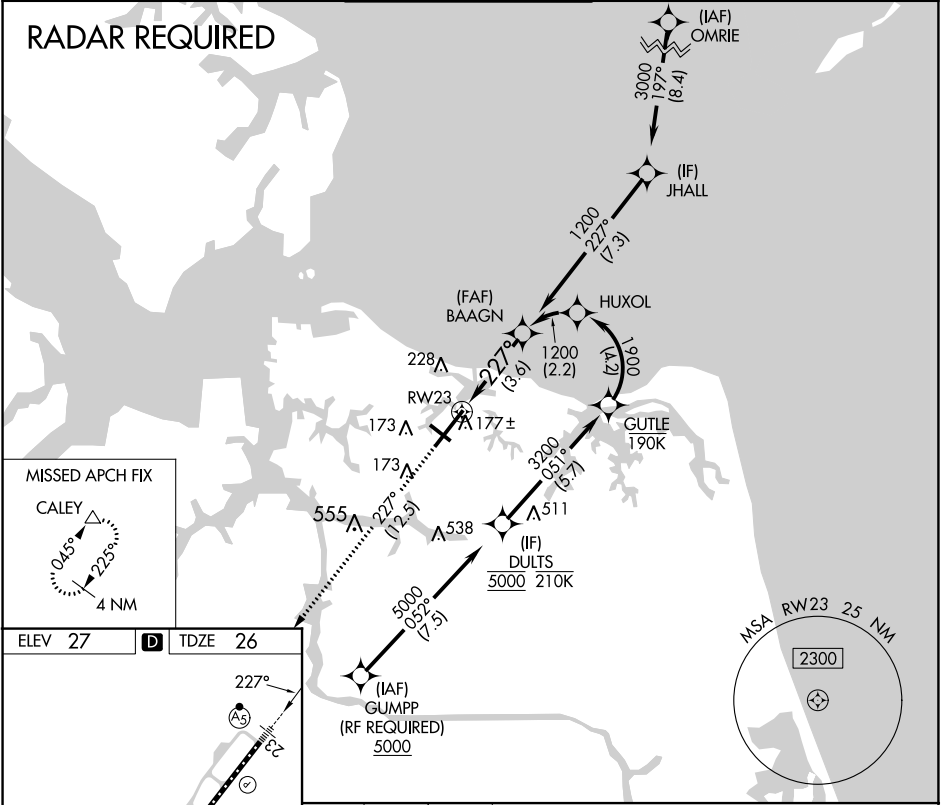
ATIS
127.15

NORFOLK APP CON
118.9 353.7

NORFOLK TOWER
120.8 257.8

GND CON
121.9

CLNC DEL
118.5



CATEGORY	A	B	C	D
RNP 0.10 DA		432-¾	406 (500-¾)	
RNP 0.30 DA		491-1	465 (500-1)	

AUTHORIZATION REQUIRED

NE-3, 13 JUN 2024 to 11 JUL 2024

NE-3, 13 JUN 2024 to 11 JUL 2024