


# RNAV (RNP) Z RWY 28R

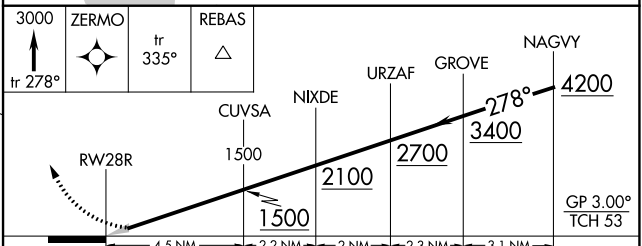
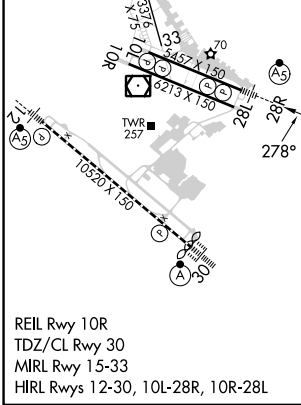
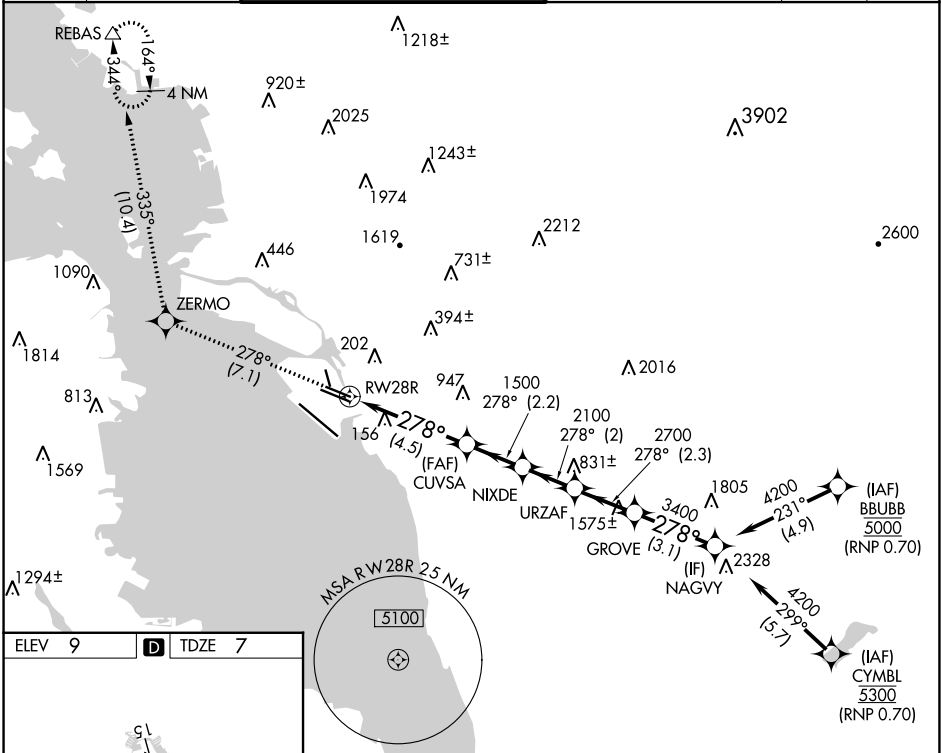
METRO OAKLAND INTL (OAK)

APP CRS <b>278°</b>	Rwy Idg <b>5457</b>
	TDZE <b>7</b>
	Apt Elev <b>9</b>

▼ For uncompensated Baro-VNAV systems, procedure NA below 1°C (34°F) or above 54°C (130°F). For inop MALSR, increase RNP 0.11 DA all Cats visibility to RVR 4500. GPS required.

MALSR  MISSED APPROACH: Climb to 3000 on track 278° to ZERMO and on track 335° to REBAS and hold.

D-ATIS <b>133.775</b>	NORCAL APP CON <b>125.35 263.15</b>	OAKLAND TOWER <b>118.3 291.65</b> (Rwys 10L/R-28L/R, 15-33) <b>127.2 256.9</b> (Rwy 12-30)	GND CON <b>121.9</b> (Rwys 10L/R-28L/R, 15-33) <b>121.75</b> (Rwy 12-30)	CLNC DEL <b>121.1</b>	CPDLC
--------------------------	----------------------------------------	--------------------------------------------------------------------------------------------------	--------------------------------------------------------------------------------	--------------------------	-------



CATEGORY	A	B	C	D
RNP 0.11 DA		276/24	269 (300-1/2)	
RNP 0.30 DA		414/45	407 (500-7/8)	

## AUTHORIZATION REQUIRED

SW-2, 13 JUN 2024 to 11 JUL 2024

SW-2, 13 JUN 2024 to 11 JUL 2024