

APP CRS	Rwy Idg	<b>10000</b>
<b>296°</b>	TDZE	<b>9</b>
	Apt Elev	<b>9</b>

# RNAV (RNP) Z RWY 30

METRO OAKLAND INTL (OAK)

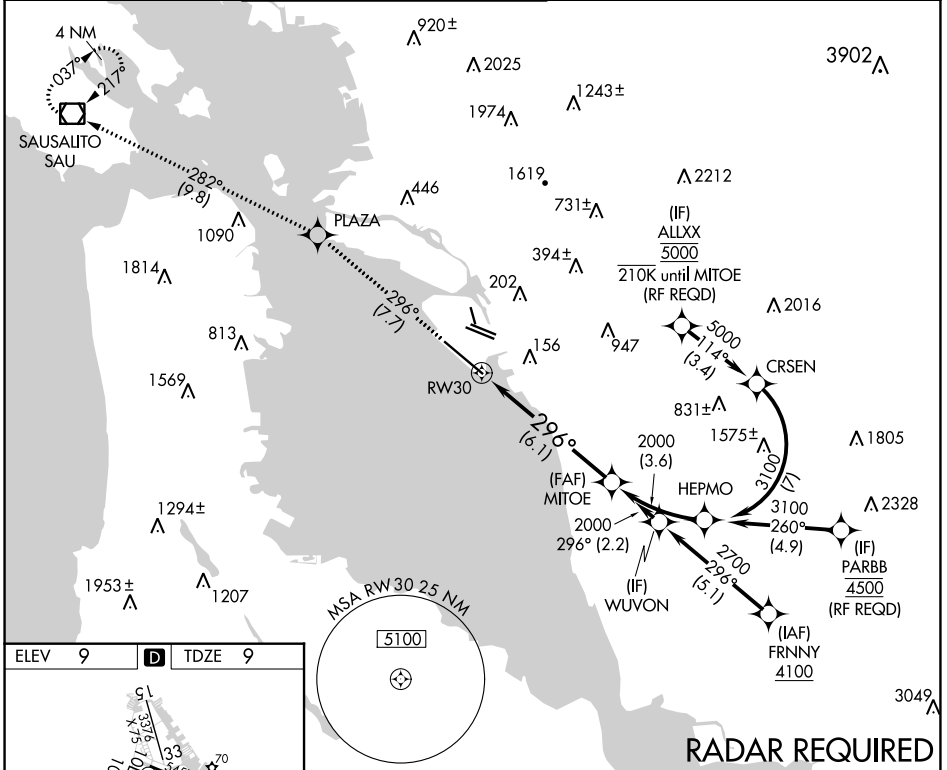
**GPS required.** For uncompensated Baro-VNAV systems, procedure NA below 1°C (34°F) or above 54°C (130°F). For inop ALS increase RNP 0.11 visibility all Cats to RVR 4000.

**OAKLAND TOWER**  
**118.3 291.65** (Rwys 10L/R-28L/R, 15-33)  
**127.2 256.9** (Rwy 12-30)

**ALSF-2**

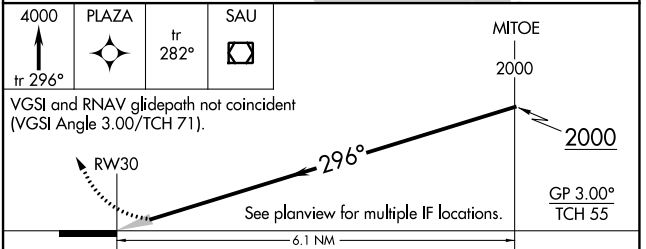
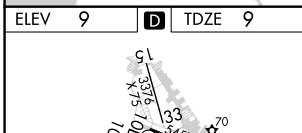
**MISSED APPROACH:** Climb to 4000 on track 296° to PLAZA and on track 282° to SAU VOR/DME and hold, continue climb-in-hold to 4000.

<b>GND CON</b> <b>121.9</b> (Rwys 10L/R-28L/R, 15-33) <b>121.75</b> (Rwy 12-30)	<b>CLNC DEL</b> <b>121.1</b>	CPDLC
---	---------------------------------	-------



SW-2, 13 JUN 2024 to 11 JUL 2024

SW-2, 13 JUN 2024 to 11 JUL 2024



CATEGORY	A	B	C	D
RNP 0.11 DA		267/24	258 (300-½)	
RNP 0.30 DA		317/24	308 (400-½)	

## AUTHORIZATION REQUIRED