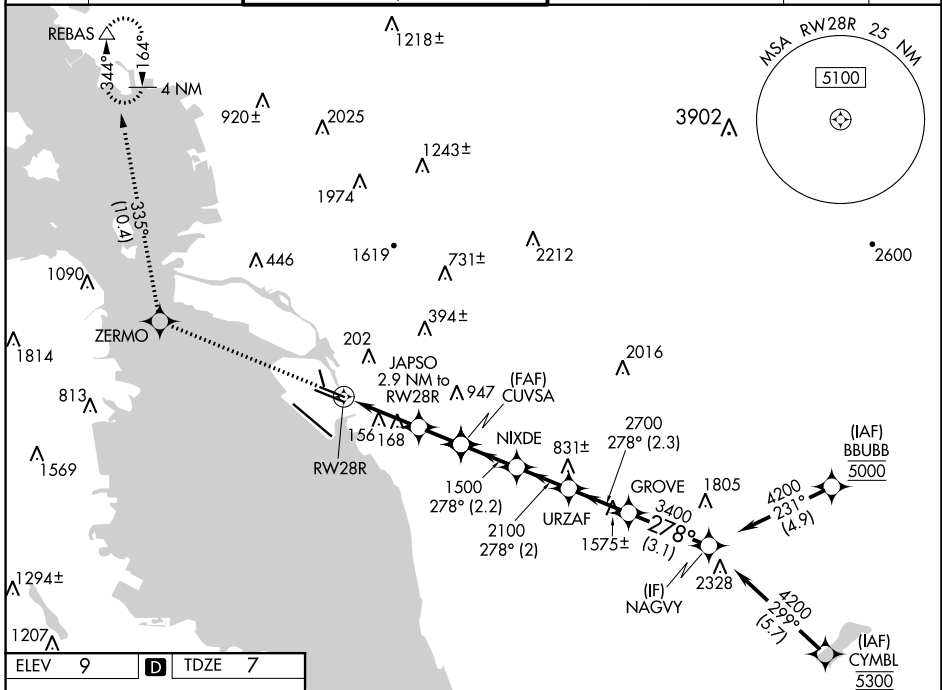


WAAS CH <b>42535</b> <b>W28B</b>	APP CRS <b>278°</b>	Rwy Idg TDZE Apt Elev	<b>5457</b> <b>7</b> <b>9</b>
--	------------------------	-----------------------------	-------------------------------------

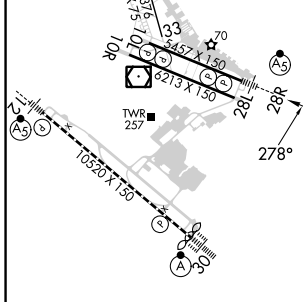
# RNAV (GPS) Y RWY 28R

METRO OAKLAND INTL (OAK)

<p><b>▼</b> DME/DME RNP-0.3 NA. For uncompensated Baro-VNAV systems, LNAV/VNAV NA below 1°C (34°F) or above 54°C (130°F). # RVR 1800 authorized with use of FD or AP or HUD to DA.</p>	<p><b>MALSR</b> </p>	<p><b>MISSED APPROACH:</b> Climb to 3000 direct ZERMO and on track 335° to REBAS and hold.</p>			
<p>D-ATIS <b>133.775</b></p>	<p>NORCAL APP CON <b>125.35 263.15</b></p>	<p>OAKLAND TOWER <b>118.3 291.65</b> (Rwys 10L/R-28L/R, 15-33) <b>127.2 256.9</b> (Rwy 12-30)</p>	<p>GND CON <b>121.9</b> (Rwys 10L/R-28L/R, 15-33) <b>121.75</b> (Rwy 12-30)</p>	<p>CLNC DEL <b>121.1</b></p>	<p>CPDLC</p>



ELEV 9	<b>D</b>	TDZE 7
--------	----------	--------



3000	ZERMO	tr	REBAS					
		335°						
*LNAV only.								
	JAPSO	CUVSA	NIXDE	URZAF	GROVE	NAGVY		
	2.9 NM to RWY 28R	1500						
	*1.2 NM to RWY 28R	980*	1500	2100	2700	3400	278°	4200
								GP 3.00° TCH 53
	1.2 NM	1.7 NM	1.6 NM	2.2 NM	2.3 NM	3.1 NM		
CATEGORY	A		B		C		D	
LPV DA #			207/24		200 (200-½)			
LNAV/VNAV DA			387/40		380 (400-¾)			
LNAV MDA	440/24		433 (500-½)		440/40		433 (500-¾)	
<b>C</b> CIRCLING	560-1		551 (600-1)		660-1¾ 651 (700-1¾)		1400-3 1391 (1400-3)	

REIL Rwy 10R  
TDZ/CL Rwy 30  
MIRL Rwy 15-33  
HIRL Rwys 12-30, 10L-28R, 10R-28L

SW-2, 13 JUN 2024 to 11 JUL 2024

SW-2, 13 JUN 2024 to 11 JUL 2024